



Regular Meeting Agenda

Steilacoom High School 54 Sentinel Drive Steilacoom, Washington

STUDY SESSION: The School Board normally convenes at 6:00 pm just prior to the start of the formal Board meeting, to discuss the Board agenda and to have a brief dinner. No decision making is undertaken. These study sessions are open to the Public; however, food is not provided for the general public.

9/25/2013 7:00 PM

I. CALL TO ORDER

(Vote)

- A. Pledge of Allegiance
- B. Roll Call
- C. Approval of Agenda

II. COMMENTS FROM THE AUDIENCE

(Information)

Members of the audience wishing to comment on specific items on this agenda will be allowed to comment briefly during the Comments From the Audience portion of the agenda. Those wishing to speak will please sign the Speaker List in order to be recognized by the Board. **Please limit your comments to three (3) minutes.** The Board will not entertain comments during any other part of the meeting. Remarks of a negative nature singling out specific employees, other than the Board or Superintendent, will be heard in executive session following the business meeting. The Board reserves the right to terminate presentations containing personal attacks on individuals.

III. PRESENTATION

(Information)

Presenter: Michele Helfgott-Waters, Military Student Transition Consultant
Presentation .pdf (p. 3)

IV. REPORTS

(Information)

Presenter: Jim Brittain
Financial and Capital Projects Report.pdf (p. 10)

V. APPROVAL OF MINUTES

(Vote)

Minutes 9.11.13.pdf (p. 22)

VI. CONSENT AGENDA

(Vote)

The purpose of the consent agenda is to reduce time going through motion, second and voting on issues of common consent. Any Board member can ask for any item to be removed from the consent agenda. There is no discussion of items on the consent agenda. By motion of the Board, remaining items are approved without discussion as part of the consent agenda. Discussion of items removed from the consent agenda occurs immediately following action on the consent agenda.

Approval of September 2013 Accounts Payable.pdf (p. 25)
Approval of Certificated Personnel Report.pdf (p. 49)
Approval of Classified Personnel Report.pdf (p. 50)

Approval of Coaching Personnel Report.pdf (p. 51)
Approval of Highly Capable Grant Application 20130919.pdf (p. 52)
Approval of Surplus of Technology Equipment.pdf (p. 67)
Approval of Surplus Math Curriculum.pdf (p. 78)

VII. OLD BUSINESS

1. Approval of Resolution 806-09-25-13, Project Notice of Action (Vote)

Presenter: Kathi Weight

Board Resolution 809-09-25-13.pdf (p. 81)

2. Approval of Permission to Bid 1918 Project (Vote)

Presenter: Calvin Gasaway

Board Background 1918 Permission to Bid.pdf (p. 83)

3. Third Reading of Policy 3416, Medication at School (Vote)

Presenter: Susanne Beauchaine

Policy 3416.pdf (p. 84)

4. Third Reading of Policy 3419, Self-Administration of Asthma and Anaphylaxis Medications (Vote)

Presenter: Susanne Beauchaine

Policy 3419.pdf (p. 87)

5. Third Reading of Policy 3420, Anaphylaxis Prevention and Response (Vote)

Presenter: Susanne Beauchaine

Policy 3420.pdf (p. 90)

6. Second Reading of Policy 2255, Alternative Learning Environment (Vote)

Presenter: Julie Wright

Policy 2255.pdf (p. 92)

VIII. COMMENTS FROM THE AUDIENCE (Information)

Members of the audience wishing to comment on specific items on this agenda will be allowed to comment briefly during the Comments From the Audience portion of the agenda. Those wishing to speak will please sign the Speaker List in order to be recognized by the Board. **Please limit your comments to three (3) minutes.** The Board will not entertain comments during any other part of the meeting. Remarks of a negative nature singling out specific employees, other than the Board or Superintendent, will be heard in executive session following the business meeting. The Board reserves the right to terminate presentations containing personal attacks on individuals

IX. BOARD COMMUNICATION (Information)

X. ANNOUNCEMENTS (Information)

XI. ADJOURNMENT (Vote)

Regularly scheduled meetings of the Board of Directors of the Steilacoom Historical School District are digitally recorded.

MILITARY STUDENT TRANSITION CONSULTANT

Michele Helfgott-Waters



*Working in partnership with SHSD and the
Military Child Education Coalition®*

Military Child Education Coalition (MCEC)

VISION and MISSION

Our Vision:

- To serve as a model of positive leadership and advocacy for ensuring inclusive, quality educational opportunities for all military-connected children

Our Mission:

- To ensure inclusive, quality educational experiences for all military-connected children affected by mobility, family separation, and transition.



MILITARY STUDENT TRANSITION CONSULTANT

- A ready solution for supporting Military Connected Students and Families
- Forge strong Partnership with the school district
- Establish collaboration among SHSD and local education agencies, public and private youth services, community groups, and installation-based resources
- Augmentation of JBLM School Liaison Office
- Enhance SHSD staff understanding of education issues related to the military lifestyle
- Supports SHSD staff in finding solutions to solve issues facing military connected students
- Assess needs, build awareness of resources, foster connections
- Support families with special needs issues

Collaboration with District Office Personnel

- District's annual plan
- Procedures for 2100 - Educational Opportunities for Military Children
- Marketing of Impact Aid and its importance



1:1 Family/MSTC Contact and Resolution of Issues

- The below numbers reflect actual issues/concerns that needed support from MSTC further than a phone call consultation or single meeting
- SHS – 5
- Saltar's Point – 2
- Pioneer – 7
- Chloe Clark – 3
- Cherrydale – 1

Looking Towards the Future

- Leadership group at Salter's Point (similar to S2S/JS2S)
- “hang out” connections group at SHS
- Collaborate with Guidance Counselor to revamp Advisory Sessions at SHS
- Coffee break groups for parents at all schools
- Creation of resource book for each school
- Marketing – Impact Aid – aimed towards at least 65% compliance
- Marketing the MSTC so families are aware of this resource
- Continuing to forge bonds with JBLM and the community

THANK YOU!

*Working in partnership with SHSD
and the Military Child Education
Coalition®*



STEILACOOM HISTORICAL SCHOOL DISTRICT NO. 1

**Board of Directors Meeting
September 25, 2013**

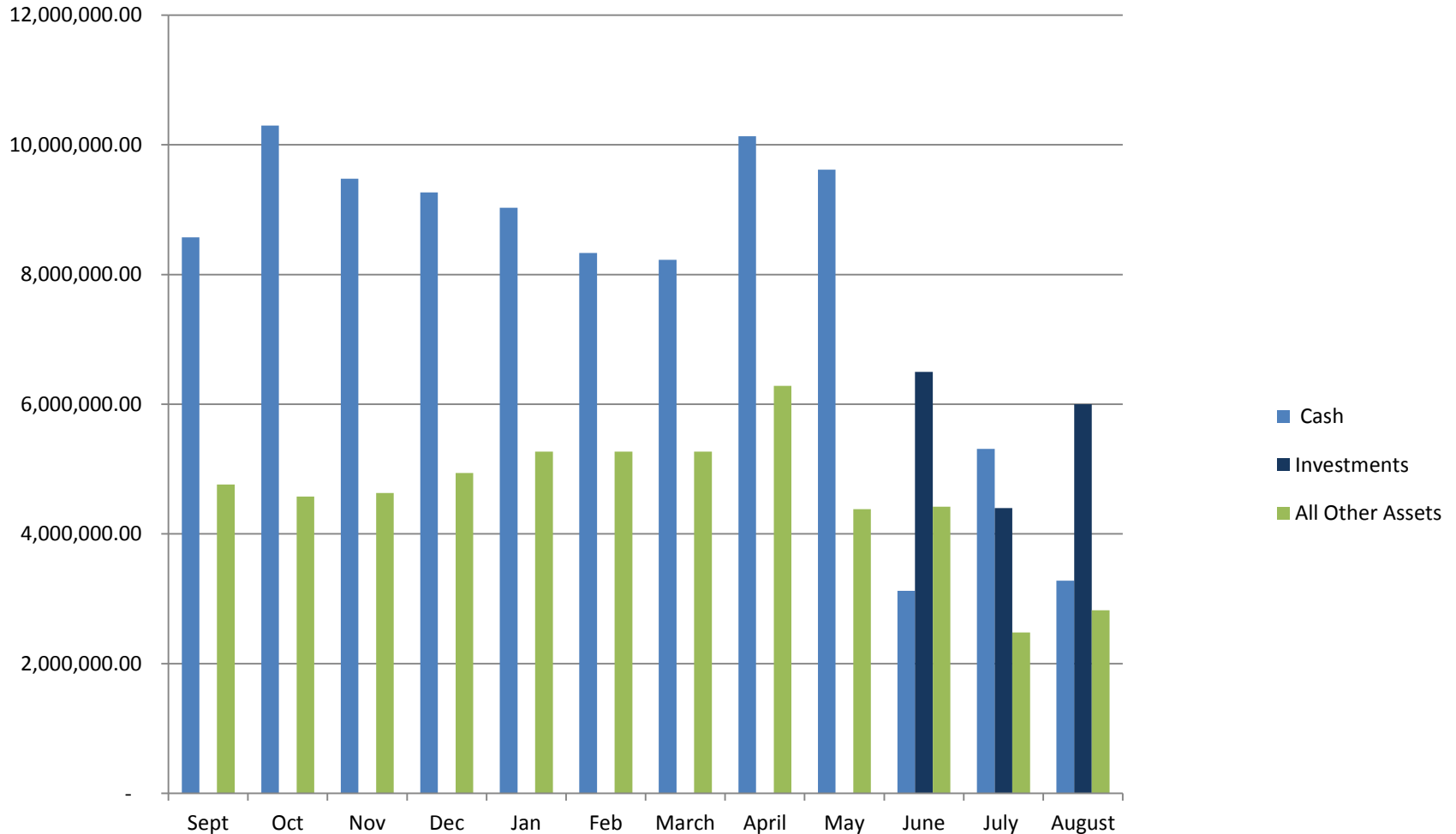
Financial Report

		Steilacoom Historical School District				
		General Fund Budget Status Report				
		August 31, 2013				
		Annual	Actual			
		Budget	For Month	Total for Year	Encumbrances	Balance
TOTAL BEGINNING FUND BALANCE		10,617,807.00		9,165,166.63		
REVENUES AND OTHER FINANCING SOURCES						
1000	Local Taxes	6,424,246.00	26,142.74	6,548,478.79		-124,232.79
2000	Local Non-Tax	1,533,850.00	21,459.02	1,143,733.54		390,116.46
3000	State, General Purpose	14,246,929.00	1,481,984.72	14,906,009.11		-659,080.11
4000	State, Special Purpose	4,396,052.00	303,404.83	3,691,524.72		704,527.28
5000	Federal, General Purpose	355,000.00	68,926.54	325,098.69		29,901.31
6000	Federal, Special Purpose	1,438,868.00	308,438.50	1,625,653.01		-186,785.01
7000	Revenues from Other District	0.00	0.00	0.00		0.00
8000	Revenues from Other Agencies	0.00	0.00	17,278.42		-17,278.42
9000	Other Financing Sources	0.00	0.00	765.00		-765.00
Total Revenues & Other Financing Sources		28,394,945.00	2,210,356.35	28,258,541.28		136,403.72
EXPENDITURES						
00	Regular Instruction	19,100,578.00	1,629,831.18	15,268,947.72	58,124.82	3,773,505.46
20	Special Ed Instruction	3,156,069.00	237,570.50	3,617,195.43	1,103.85	-462,230.28
30	Vocational Instruction	1,153,711.00	76,493.47	1,038,264.59	2,309.47	113,136.94
50&60	Compensatory Education	1,006,571.00	76,874.86	789,898.42	4,215.01	212,457.57
70	Other Instructional Pgms	34,286.00	-134,701.31	110,978.34	0.00	-76,692.34
80	Community Services	0.00	0.00	3,738.43	0.00	-3,738.43
97	General Support	7,269,662.20	668,746.39	6,198,079.19	328,242.28	743,340.73
98	Food Service	1,142,806.00	3,196.02	840,251.26	414.26	302,140.48
99	Pupil Transportation	1,281,000.00	14,582.14	1,179,753.79	16,134.84	85,111.37
Total Expenditures		34,144,683.20	2,572,593.25	29,047,107.17	410,544.53	4,687,031.50
Operating Transfers to TVF, DSF, & CPF		0.00	0.00	(375,000.00)	Saltar's Point Modular - CPF	
Excess Revenues/Other Financing Sources Over (under) Expend & Oth Financing Uses		(5,749,738.20)	(362,236.90)	(1,163,565.89)		
Total Ending Fund Balance		<u>4,868,069.00</u>		<u>8,001,600.74</u>		
GL 810	Reserved For Other Items	451,474.00		521,473.53		
GL 821	Restricted for Carryover			22,658.66		
GL 835	Reserved Arb Rebate					
GL 840	Reserved For Inventory	18,000.00		18,000.00		
GL 845	Reserved for Self Insurance	342,500.00				
GL 850	Reserved Uninsured Risks	0.00		0.00		
GL 870	Unreserved, Dsgntd-Oth Items	2,729,000.00		2,354,000.00		
GL 872	Comm't'd Min Fund Balance Policy	1,971,717.00		1,969,771.00		
GL 875	Unreserved Dsgntd-Conting	400,000.00				
GL 888	Assigned to Other Purposes	0.00		0.00		
GL 890	Unreserved Undsgntd Fund Bal	4,705,116.00		3,115,697.55		

General Fund

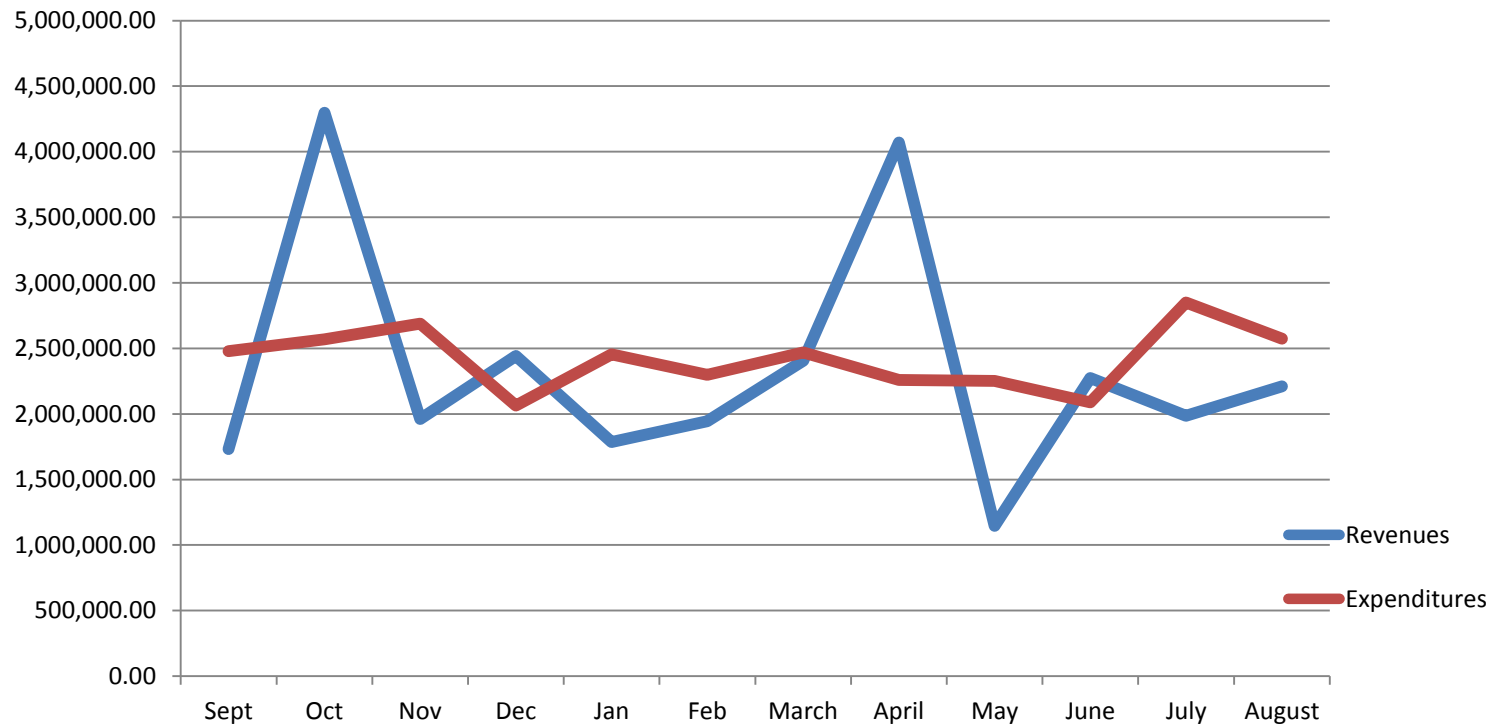
Cash, Investments and Other Assets

August 31, 2013



Total Assets - \$12,105,760

General Fund Revenues and Expenses August 31, 2013



Revenues \$28,258,541 Expenses \$29,047,107
Encumbrances \$410,544

General Fund Budget/Actual Comparison

2012-13 to 2013-14

		Budget 2012-2013	Actual 2012-2013	Budget 2013-2014
TOTAL BEGINNING FUND BALANCE		10,617,807	9,165,167	7,702,768
REVENUES AND OTHER FINANCING SOURCES				
	Local Taxes	6,424,246	6,548,479	6,552,567
	Local Non-Tax	1,533,850	1,143,734	1,024,475
	State, General Purpose	14,246,929	14,906,009	16,199,557
	State, Special Purpose	4,396,052	3,691,525	3,477,626
	Federal, General Purpose	355,000	325,099	261,000
	Federal, Special Purpose	1,438,868	1,625,653	1,810,049
	Revenues from Other Agencies	0	17,278	20,000
	Othr Financing Sources		765	
Total Revenues & Other Financing Sources		28,394,945	28,258,541	29,345,274
EXPENDITURES				
	Regular Instruction	19,463,995	15,268,948	18,037,423
	Federal Stimulus	30,000	0	0
	Special Education Instruction	3,064,921	3,617,195	3,831,895
	Vocational Education Instruction	1,505,444	1,038,265	954,484
	Compensatory Education Instruction	614,534	789,898	868,988
	Other Instructional	26,511	110,978	780,308
	Community Service	0	3,738	12,000
	Support Services	9,439,278	8,218,084	8,256,500
Total Expenditures		34,144,683	29,047,107	32,741,598
Excess Revenues/Other Financing Sources				
Over (under) Expend. & Oth Financing Uses		-5,749,738	-1,163,566	-3,396,324
Total Ending Fund Balance		4,868,069	8,001,601	4,306,444

**Steilacoom Historical School District
Capital Projects Fund Budget Status Report
August 31, 2013**

		Annual Budget	Actual For Month	Total for Year	Encumbrances	Balance
TOTAL BEGINNING FUND BALANCE		2,833,587.00		2,691,527.39		
REVENUES AND OTHER FINANCING SOURCES						
1000 Local Taxes		-	-	-		-
2000 Local Non-Tax		10,000	345.47	51,646.70		(41,646.70)
3000 State, General Purpose		-	-	-		-
4000 State, Special Purpose		-	-	-		-
5000 Federal, General Purpose		-	-	-		-
6000 Federal, Special Purpose		-	-	-		-
7000 Revenues from Other District		-	-	-		-
8000 Revenues from Other Agencies		-	-	-		-
9000 Other Financing Sources		1,165,000	6,000.00	1,979,238.24		(814,238.24)
Total Revenues & Other Financing Sources		1,175,000	6,345.47	2,030,884.94		(855,884.94)
EXPENDITURES						
10 Sites		550,000	18,477.17	17,077.92	108,963.54	423,958.54
20 Buildings		1,100,000	133,913.76	346,002.49	932,258.86	(178,261.35)
30 Equipment		250,000	8,564.93	10,473.58	8,624.22	230,902.20
40 Energy		170,000	-	-	-	170,000.00
50 Sales & Lease Expenditures		-	-	9,889.22	2,780.35	(12,669.57)
60 Bond Issuance Expenditures		-	-	-	-	-
90 Debt		-	-	-	-	-
Total Expenditures		2,070,000	160,955.86	383,443.21	1,052,626.97	633,929.82
Excess Revenues/Other Financing Sources Over (under) Expend. & Oth Financing Uses		(895,000)	(154,610.39)	1,647,441.73		1,489,814.76
Total Ending Fund Balance		1,938,587.00		4,338,969.12		
GL 861 Reserve, Bond Proceeds		44,548		-		
GL 863 Reserve of State Proceeds		-		375,000.00		
GL 865 Reserve, Other Items		-		108.75		
GL 866 Reserve, Impact Fees		20,565		29,686.87		
GL 889 Assigned to Special Purposes		1,873,474		3,934,173.50		

Steilacoom Historical School District
Debt Service Fund Budget Status Report
August 31, 2013

		Annual Budget	Actual For Month	Total for Year	Encumbrances	Balance
TOTAL BEGINNING FUND BALANCE		\$ 5,078,643		2,739,693.28		
REVENUES AND OTHER FINANCING SOURCES						
1000	Local Taxes	5,801,545	24,020.71	5,903,439.18		(101,894.18)
2000	Local Non-Tax	-	226.47	633.31		(633.31)
3000	State, General Purpose	-	-	-		-
5000	Federal, General Purpose	-	-	-		-
6000	Federal, Special Purpose	-	-	-		-
9000	Other Financing Sources	-	-	-		-
Total Revenues & Other Financing Sources		5,801,545	24,247.18	5,904,072.49		(102,527.49)
EXPENDITURES						
	Matured Bond Expenditures	3,500,000	-	3,500,000.00		-
	Interest on Bonds	2,690,675	-	2,690,675.00		-
	Interfund Loan Interest		-	-		-
	Bond Transfer Fees	10,000	-	1,203.61		8,796.39
	Arbitrage Rebate	-	-			-
	Underwriter's fees	-	-	-		-
Total Expenditures		6,200,675	-	6,191,878.61	-	8,796.39
Excess Revenues/Other Financing Sources						
Over (under) Expend. & Oth Financing Uses		(399,130)	24,247.18	(287,806.12)		
Total Ending Fund Balance		<u>\$ 4,679,513</u>		<u>\$ 2,451,887.16</u>		
Ending Fund Balance Accounts						
GL 830	Reserved For Debt Service	1,268,561		2,451,887.16		
GL 889	Assigned to Fund Purposes	3,410,952		-		

		Steilacoom Historical School District				
		ASB Fund Budget Status Report				
		August 31, 2013				
		Annual	Actual			
		Budget	For Month	Total for Year	Encumbrances	Balance
	TOTAL BEGINNING FUND BALANCE	\$ 221,435		\$ 219,169.49		
	REVENUES AND OTHER FINANCING SOURCES					
	1000 General Student Body	72,950	(10.61)	117,684.03		(44,734.03)
	2000 Athletics	114,600	1,343.00	69,829.14		44,770.86
	3000 Classes	44,574	-	42,131.32		2,442.68
	4000 Clubs	253,917		292,289.86		(38,372.86)
	6000 Private Moneys	16,450	(102.00)	2,035.15		14,414.85
	Total Revenues & Other Financing Sources	502,491	1,230.39	523,969.50		(21,478.50)
	EXPENDITURES					
	1000 General Student Body	98,827	1,214.16	60,621.61	153.16	38,052.23
	2000 Athletics	160,264	1,720.82	149,810.05	5,417.80	5,036.15
	3000 Classes	52,941	41.42	40,507.39	730.00	11,703.61
	4000 Clubs	370,185	10,345.16	299,991.35	5,735.18	64,458.47
	6000 Private Moneys	10,800	-	203.87	565.60	10,030.53
	Total Expenditures	693,017	13,321.56	551,134.27	12,601.74	129,280.99
	Excess Revenues/Other Financing Sources					
	Over (under) Expend. & Oth Financing Use	(190,526)	(12,091.17)	(27,164.77)		(163,361.23)
	Total Ending Fund Balance	30,909		179,402.98		
	Ending Fund Balance Accounts					
	GL 819 Restricted for Fund Purposes	30,909		179,402.98		

Fund Balance

August 31, 2013

G/L Code	Account Description	General Fund	Debt Service Fund	Capital Projects Fund	ASB Fund
810	Restricted for Other Items	\$521,474			
819	Restricted to Fund Purpose				\$179,403
	Restricted for Carryover of Restricted				
821	Revenue	\$22,659			
830	Restricted for Debt Service		\$2,451,887		
840	Nonexpendable Fund Balance	\$18,000			
863	Restricted from State Proceeds			\$375,000	
865	Restricted from Other Proceeds			\$109	
866	Restricted from Impact Fees			\$29,687	
870	Committed to Other Purposes	\$2,354,000			
872	Committed to Minimum Fund Balance	\$1,969,771			
889	Assigned to Fund Balance			\$3,934,169	
890	Unassigned Fund Balance	\$3,115,697			
Total Fund Balance of Fund		\$8,001,601	\$2,451,887	\$4,338,969	\$179,403

Board Meeting September 25, 2013 Capital Projects

Land

Abitibi Property:

1. Chambers Bay, LCC proposed acquisition of 3.8 acres.
2. Appraisal to be completed to determine market value.
3. Board action will be required to surplus property.

Upper Field/Bus Barn:

1. Survey being conducted to determine boundary line adjustment on the district's two parcels – approximately .80 would be added to Upper Field parcel.
2. Property will be re-appraised to determine market value.

Western State Parking:

1. DSHS drafting an agreement to lease a portion of their parking lot for student parking.
2. District would need to install a driveway - approximately 15 to 20 feet long.
3. District would be required to place jersey blocks in parking lot to established student parking area.

Building and Remodel Projects

Saltar's Point Modular

1. Town provided SHSD Certificate of Occupancy on 8/28/2013.
2. All inspection items have been resolved and completed.
3. District has not received invoice for modular building – estimated total \$710,000.
4. Board approval of “Final Acceptance of Saltar's Point Modular Building Property” will be requested at October 9, 2013 Board meeting.

1918 Remodel:

1. Capital Project Manager and Architect will provide information on project.

Transportation Facility:

1. City of DuPont reviewing design plans.
2. Dept. of Ecology and Pierce County reviewing storm water and environment impact issues.



Regular Meeting Minutes

9/11/2013

Anderson Island Elementary 13005 Camus Road Anderson Island, WA

I. CALL TO ORDER

Chair Scott called the meeting order at 6:35 pm.

Anderson Island Elementary students lead the Pledge of Allegiance.

All Board Directors and Superintendent Weight present.

Director Denning made a motion to approve the agenda, Director Callanan seconded the motion. Director Winkler requested the certificated personnel report be moved from the Consent Agenda to New Business. The motion passed 5/0.

Each Board Director, Superintendent and Executive Assistant to Superintendent introduced themselves to Anderson Island staff and community present.

II. COMMENTS FROM THE AUDIENCE

No comments.

Chair Scott asked for a moment of quiet reflection as recognition of Patriot Day, 9/11/13.

III. PRESENTATION

Principal Laurie Vallieres introduced teachers Jodi Sutcliff and Shelley Crossen who presented a video production of the Anderson Island students during their first week of school.

IV. REPORTS

1. 1918 Building Project Update

Executive Director Brittain updated the Board on the progress of the meetings with the Town of Steilacoom and timelines regarding permits and bids.

V. APPROVAL OF MINUTES

Director Wong made a motion to approve the 8.22.13 minutes; Director Callanan seconded the motion and the motion passed (4/0/Denning abstain).

VI. CONSENT AGENDA

Director Winkler made a motion to approve the Consent Agenda with the modification of the Certificated Personnel Report moved to New Business; Director Denning seconded the motion and the motion passed (5/0).

VII. OLD BUSINESS

a. Second Reading of Policy 3416, Medication at School

b. Second Reading of Policy 3419, Self-Administration of Asthma and Anaphylaxis Medications

c. Second Reading of Policy 3420, Anaphylaxis Prevention and Response

Director Winkler made a motion to move all three policies to a third reading; Director Denning seconded the motion and the motion passed (4/1).

VIII. NEW BUSINESS

a. First Reading of Policy 2255, Alternative Learning Experience

Director Callanan made a motion to move Policy 2255 to a second reading; Director Denning seconded the motion and the motion passed (5/0).

b. Approval of Certificated Personnel Report

Director Winkler stated his desire to retain the current certificated nurse staffing model. Director Winkler made a motion to approve the report; Director Wong seconded the motion and the motion passed (5/0).

IX. COMMENTS FROM THE AUDIENCE

- Six Anderson Island community members commented on transportation issue concerns.
- One Anderson Island community members commented positively on the new staff to the island school.

X. BOARD COMMUNICATION

- Director Winkler received communication from a staff member.
- Directors and Supt. received an invitation to an upcoming Change of Command for a high school staff member.
- The Board received a thank you card and note from past Superintendent Bill Fritz.

XI. ANNOUNCEMENTS

- Chair Scott thanked the staff and parents of Anderson Island for hosting the Board meeting, BBQ and Open House
- Director Denning thanked those who sent good/get well wished since his auto accident in early August.

XII. ADJOURNMENT

Director Denning made a motion to adjourn the meeting at 7:21 pm; Director Callanan seconded the motion and the motion passed (5/0).

(Chair)

(Secretary/Superintendent)

The following vouchers, as audited and certified by the Auditing Officer as required by RCW 42.24.080, and those expense reimbursement claims certified as required by RCW 42.24.090, are approved for payment. Those payments have been recorded on this listing which has been made available to the board.

As of September 25, 2013, the board, by a _____ vote, approves payments, totaling \$49,808.58. The payments are further identified in this document.

Total by Payment Type for Cash Account, CPF WARRANTS OUTSTANDING:
Warrant Numbers 200089 through 200092, totaling \$49,808.58

Secretary _____ Board Member _____
Board Member _____ Board Member _____
Board Member _____ Board Member _____

Check Nbr	Vendor Name	Check Date	Invoice Number	Invoice Desc	PO Number	Invoice Amount	Check Amount
200089	ERICKSON MCGOVERN	09/16/2013	5	Architectural services for Building 1918	2001213043	43,625.27	43,625.27
200090	GREENEGASAWAY	09/16/2013	AUGUST	Administrative Center Relocation Construction Management Services	2001213039	3,691.75	3,691.75
200091	MOUNTAIN ALARM	09/16/2013	802929	INSTALLATION OF ALARM SYSTEM IN SP MODULAR	0	1,751.19	1,751.19
200092	THE NEWS TRIBUNE	09/16/2013	257759	Open PO for Capital Projects	2001213040	740.37	740.37
4	Computer	Check(s) For a Total of					49,808.58

	0	Manual	Checks For a Total of	0.00
	0	Wire Transfer	Checks For a Total of	0.00
	0	ACH	Checks For a Total of	0.00
	4	Computer	Checks For a Total of	49,808.58
Total For	4	Manual, Wire Tran, ACH & Computer	Checks	49,808.58
Less	0	Voided	Checks For a Total of	0.00
			Net Amount	49,808.58

The following vouchers, as audited and certified by the Auditing Officer as required by RCW 42.24.080, and those expense reimbursement claims certified as required by RCW 42.24.090, are approved for payment. Those payments have been recorded on this listing which has been made available to the board.

As of September 25, 2013, the board, by a _____ vote, approves payments, totaling \$9,613.18. The payments are further identified in this document.

Total by Payment Type for Cash Account, ASB WARRANTS OUTSTANDING:

Warrant Numbers 401336 through 401343, totaling \$9,613.18

Secretary _____ Board Member _____

Board Member _____ Board Member _____

Board Member _____ Board Member _____

Check Nbr	Vendor Name	Check Date	Invoice Number	Invoice Desc	PO Number	Invoice Amount	Check Amount
401336	CASCADE BAGEL & DELI, INC	09/16/2013	125395	4012 Student Store Cascade Bagel OPEN PO not to exceed \$3000.00 for 2013-14 School Year	4061314009	34.30	99.62
			125424	4012 Student Store Cascade Bagel OPEN PO not to exceed \$3000.00 for 2013-14 School Year	4061314009	34.30	
			125469	4012 Student Store Cascade Bagel OPEN PO not to exceed \$3000.00 for 2013-14 School Year	4061314009	31.02	
401337	COSTCO	09/16/2013	223267439	4006- DECA Costco Membership Renewal Fall Billing 2013-14	4061314019	110.00	110.00
401338	EK BEVERAGES	09/16/2013	369461	4012 Student Store EK Beverage Open PO for School Year 2013-14 Not to exceed \$3000.00	4061314005	490.05	490.05
401339	HALFON CANDY COMPANY	09/16/2013	518506	4012 Student Store Halfon	4061314006	421.43	421.43

Check Nbr	Vendor Name	Check Date	Invoice Number	Invoice Desc	PO Number	Invoice Amount	Check Amount
401340	INK INC	09/16/2013	30756	Open PO for 2013-14 not to exceed \$3000.00 2013 Tennis Hooded Sweatshirt See attachment	4061314002	164.10	164.10
401341	NASSP	09/16/2013	RENEWAL M MARTIN	RENEWAL FOR MICHAEL MARTIN	0	85.00	85.00
401342	RIDDELL	09/16/2013	60216114	2001- Football Riddell Helmet & Shoulder Pad Equipment Order **** FALL BILLING- Billing Date of September 1st 2013**** Billed to Football Account	4061314020	6,991.44	6,991.44
401343	WINNING SEASON	09/16/2013	M2013128	2005 Fastpitch Winning Season- Warm up Jackets for Fastpitch **** DO NOT FAX Already ordered and received ***** See attachment for Invoice	4061314021	1,251.54	1,251.54

8 Computer Check(s) For a Total of 9,613.18

	0	Manual	Checks For a Total of	0.00
	0	Wire Transfer	Checks For a Total of	0.00
	0	ACH	Checks For a Total of	0.00
	8	Computer	Checks For a Total of	9,613.18
Total For	8	Manual, Wire Tran, ACH & Computer	Checks	9,613.18
Less	0	Voided	Checks For a Total of	0.00
			Net Amount	9,613.18

The following vouchers, as audited and certified by the Auditing Officer as required by RCW 42.24.030, and those expense reimbursement claims certified as required by RCW 42.24.090, are approved for payment. Those payments have been recorded on this listing which has been made available to the board.

As of September 25, 2013, the board, by a _____ vote, approves payments, totaling \$610.50. The payments are further identified in this document.

Total by Payment Type for Cash Account, ASB WARRANTS OUTSTANDING:
Warrant Numbers 401334 through 401335, totaling \$610.50

Secretary _____ Board Member _____
Board Member _____ Board Member _____
Board Member _____ Board Member _____

Check Nbr	Vendor Name	Check Date	Invoice Number	Invoice Desc	PO Number	Invoice Amount	Check Amount
401334	STEILACOOM SCHOOL DISTRICT	09/16/2013	PIO TRANSFER	DISBURSEMENT OF 6000 TO GEN FUND FOR NEEDY STUDENTS	0	102.00	102.00
401335	WESTERN WASH BASEBALL UMPIRES	09/16/2013	41	Ump fees for baseball	4051213077	508.50	508.50
				2 Computer	Check(s) For a Total of		610.50

	0	Manual	Checks For a Total of	0.00
	0	Wire Transfer	Checks For a Total of	0.00
	0	ACH	Checks For a Total of	0.00
	2	Computer	Checks For a Total of	610.50
Total For	2	Manual, Wire Tran, ACH & Computer	Checks	610.50
Less	0	Voided	Checks For a Total of	0.00
			Net Amount	610.50

The following vouchers, as audited and certified by the Auditing Officer as required by RCW 42.24.080, and those expense reimbursement claims certified as required by RCW 42.24.090, are approved for payment. Those payments have been recorded on this listing which has been made available to the board.

As of September 25, 2013, the board, by a _____ vote, approves payments, totaling \$109,149.62. The payments are further identified in this document.

Total by Payment Type for Cash Account, GF WARRANTS OUTSTANDING:
Warrant Numbers 112951 through 112996, totaling \$109,149.62

Secretary _____ Board Member _____
Board Member _____ Board Member _____
Board Member _____ Board Member _____

Check Nbr	Vendor Name	Check Date	Invoice Number	Invoice Desc	PO Number	Invoice Amount	Check Amount
112951	ALBERS & COMPANY INC	09/16/2013	1024	PROFESSIONAL SERVICE FEES FOR 12/13 SY. DO NOT FAX.	81213095	2,698.40	2,698.40
112952	AUTOLUBE TIRE & AUTOMOTIVE	09/16/2013	0000008690	OPEN PURCHASE ORDER 2012-2013 FOR VEHICLE REPAIRS FOR GROUNDS & DISTRICT VEHICLES -PLATE7385C	101213114	380.96	5,719.89
			0000008709	OPEN PURCHASE ORDER 2012-2013 FOR VEHICLE REPAIRS FOR GROUNDS & DISTRICT VEHICLES -Plate-21516C	101213114	588.95	
			0000008735	OPEN PURCHASE ORDER 2012-2013 FOR VEHICLE REPAIRS FOR GROUNDS & DISTRICT VEHICLES PLATE 47528C	101213114	457.48	
			0000008740	OPEN PURCHASE ORDER 2012-2013 FOR VEHICLE REPAIRS FOR GROUNDS & DISTRICT VEHICLES PL-97426C	101213114	68.83	
			0000008754	OPEN PURCHASE	101213114	37.39	

Check Nbr	Vendor Name	Check Date	Invoice Number	Invoice Desc	PO Number	Invoice Amount	Check Amount
				ORDER 2012-2013 FOR VEHICLE REPAIRS FOR GROUNDS & DISTRICT VEHICLES -PL94745C			
			0000008820	OPEN PURCHASE	101213114	172.69	
				ORDER 2012-2013 FOR VEHICLE REPAIRS FOR GROUNDS & DISTRICT VEHICLES -PL94719C			
			0000008842	OPEN PURCHASE	101213114	79.94	
				ORDER 2012-2013 FOR VEHICLE REPAIRS FOR GROUNDS & DISTRICT VEHICLES PL-A1705C			
			0000008851	OPEN PURCHASE	101213114	380.35	
				ORDER 2012-2013 FOR VEHICLE REPAIRS FOR GROUNDS & DISTRICT VEHICLES -PLATE 7774C			
			0000008854	OPEN PURCHASE	101213114	653.41	
				ORDER 2012-2013 FOR VEHICLE REPAIRS FOR GROUNDS & DISTRICT VEHICLES -PL21515C			
			0000008861	OPEN PURCHASE	101213114	50.42	
				ORDER 2012-2013 FOR VEHICLE REPAIRS FOR GROUNDS & DISTRICT VEHICLES PLATE-94800C			
			0000008889	OPEN PURCHASE	101213114	1,795.00	
				ORDER 2012-2013 FOR VEHICLE REPAIRS FOR GROUNDS & DISTRICT VEHICLES PL-54161C			
			0000008914	OPEN PURCHASE	101213114	60.27	
				ORDER 2012-2013			

Check Nbr	Vendor Name	Check Date	Invoice Number	Invoice Desc	PO Number	Invoice Amount	Check Amount
				FOR VEHICLE REPAIRS FOR GROUNDS & DISTRICT VEHICLES PLA0190C			
			0000008986	OPEN PURCHASE ORDER 2012-2013 FOR VEHICLE REPAIRS FOR GROUNDS & DISTRICT VEHICLES -PL54162C	101213114	787.92	
			0000009044	OPEN PURCHASE ORDER 2012-2013 FOR VEHICLE REPAIRS FOR GROUNDS & DISTRICT VEHICLES	101213114	206.28	
112953	BUILDERS HARDWARE & SUPPLY	09/16/2013	S3213030.001	OPEN PURCHASE ORDER FOR 2012-2013 FOR SUPPLIES	101213173	19.67	19.67
112954	BYRD, MEGAN MARIE	09/16/2013	TARGET 6TH GRADE SUP	8/22/13 TARGET 6TH GRADE CLASSROOM SUPPLIES	0	36.12	36.12
112955	CAMBIUM LEARNING	09/16/2013	RI 1154769	Voyager Reading books full Program Student Kits for 6 LAP CC-McGann	91213120	556.85	556.85
112956	CAPITAL ELECTRIC INCORP	09/16/2013	23956	Install electrical outlets for Cherrydale laptop carts.	111213046	2,357.57	2,357.57
112957	CELESTE L JOHNSTON	09/16/2013	MILEAGE REIMB AUG	INNER-DISTRICT MILEAGE 8/2 8/8 8/9 8/14 8/15 8/22 8/23 8/26 8/27 8/30 MILEAGE TO DANDE PICK UP BADGES, CLOVER PARK PRINTING	0	57.53	57.53
112958	CLAUSON, ALEXANDER W	09/16/2013	COSTCO/FRED MEYER 8	8/24 COSTCO - MEMBERSHIP CARD FOR SCHOOL 8/24 COSTCO STAFF DAY FOOD 8/25 COSTCO PD DAY DINNER	0	545.98	545.98

Check Nbr	Vendor Name	Check Date	Invoice Number	Invoice Desc	PO Number	Invoice Amount	Check Amount
112959	COLLEGE BOARD PUBLICATIONS	09/16/2013	EI47286230	8/25 FRED MEYER PD DAY DINNER College Board College Bound Seniors CD Value Bundle SAT Score Reporting	4311213130	475.89	475.89
112960	CTS	09/16/2013	2013080186	TELECOMMUNICATIONS SERVICES FOR THE 12/13 SY. OPEN PO. DO NOT FAX	81213077	26.00	26.00
112961	CULLIGAN	09/16/2013	201309380587	OPEN PURCHASE ORDER 2012-2013 FOR WATER	101213009	69.85	69.85
112962	CULLIGAN	09/16/2013	0033295	OPEN PO FOR WATER AT 511 CHAMBERS ST. DO NOT FAX TO VENDOR	81213039	37.02	42.35
			201309400885	OPEN PO FOR WATER AT 510 CHAMBERS ST. DO NOT FAX TO VENDOR	81213040	5.33	
112963	EMPLOYER ADMIN SERVICES INC	09/16/2013	419382013	TSA PLAN PAYMENT FOR 12/13 SY. DO NOT FAX	81213144	156.75	156.75
112964	FAIRFAX HOSPITAL	09/16/2013	1233	Open P.O. for Fairfax Hospital/NWSOIL for out of district students for the 2012-2013 School Year.	91213029	15,000.00	29,400.00
			1269	Open P.O. for Fairfax Hospital/NWSOIL for out of district students for the 2012-2013 School Year.	91213029	14,400.00	
112965	FARRELLI'S WOOD FIRE PIZZA	09/16/2013	PIO FIELD TRIP 5/21	Farrelli's Field Trip	2371213098	140.00	315.00
			PIO FIELDTRIP 5/28	Farrelli's Field Trip	2371213098	175.00	
112966	FOLLETT LIBRARY RESOURCES	09/16/2013	841283-2	FOR PO PURPOSES ONLY: PLEASE DO NOT FAX TINA RIDGE/REPLACEMENT BOOKS FOR LIBRARY BASED ON SUBMITTED FINES	1461213121	278.83	290.97

Check Nbr	Vendor Name	Check Date	Invoice Number	Invoice Desc	PO Number	Invoice Amount	Check Amount
			841283f-1	FOR 12/13 YEAR FOR PO PURPOSES ONLY: PLEASE DO NOT FAX TINA RIDGE/REPLACEMENT BOOKS FOR LIBRARY BASED ON SUBMITTED FINES FOR 12/13 YEAR	1461213121	12.14	
112967	GRAINGER	09/16/2013	9226705003	OPEN PURCHASE ORDER FOR 2012/2013 FOR SUPPLIES	101213130	38.31	38.31
112968	GRAVES, SARA COLLEEN	09/16/2013	REIMB STARBUCKS 8/27	8/27/13 STARBUCKS - PD COFFEE FOR BACK TO SCHOOL	0	45.78	45.78
112969	HAROLD LEMAY ENTERPRISES	09/16/2013	4245616	OPEN PO FOR DISTRICT WIDE GARBAGE. DO NOT FAX PO.	81213052	113.87	1,916.80
			4246220	OPEN PO FOR DISTRICT WIDE GARBAGE. DO NOT FAX PO.	81213052	304.95	
			4246306	OPEN PO FOR DISTRICT WIDE GARBAGE. DO NOT FAX PO.	81213052	153.37	
			4246316	OPEN PO FOR DISTRICT WIDE GARBAGE. DO NOT FAX PO.	81213052	503.11	
			4246368	OPEN PO FOR DISTRICT WIDE GARBAGE. DO NOT FAX PO.	81213052	302.02	
			4246505	OPEN PO FOR DISTRICT WIDE GARBAGE. DO NOT FAX PO.	81213052	487.34	
			4247411	OPEN PO FOR DISTRICT WIDE GARBAGE. DO NOT FAX PO.	81213052	52.14	
112970	HEATER, MARGARET	09/16/2013	1005	Teacher training	181213075	3,100.00	3,100.00
112971	HENSLEY CONSTRUCTION	09/16/2013	65	Do not fax - Nancy will work directly with contractor. For PO purposes only.	1461213129	1,673.98	1,673.98

Check Nbr	Vendor Name	Check Date	Invoice Number	Invoice Desc	PO Number	Invoice Amount	Check Amount
112972	K & L GATES	09/16/2013	2812442	PROFESSIONAL LAWYER SERVICES FOR THE 12/13 SY. DO NOT FAX	81213094	3,896.74	5,331.74
			2822098	PROFESSIONAL LAWYER SERVICES FOR THE 12/13 SY. DO NOT FAX	81213094	1,435.00	
112973	KING COUNTY DIRECTORS ASSN	09/16/2013	3716376	KCDA - Cart Number 628764 For Principal Office Supplies *** Please see attachment for Cart order *****	4311213179	277.80	1,673.74
			3717162	CART#615575 (OFFICE & PE SUPPLIES)	1461213101	1,395.94	
112974	LEMAY MOBILE SHREDDING	09/16/2013	4253365	DISTRICT WIDE SHREDDING OPEN PO. DO NOT FAX	81213079	100.00	302.60
			4253366	DISTRICT WIDE SHREDDING OPEN PO. DO NOT FAX	81213079	102.60	
			4253368	DISTRICT WIDE SHREDDING OPEN PO. DO NOT FAX	81213079	100.00	
112975	LOWES	09/16/2013	99001959339	OPEN PURCHASE ORDER 2012-2013 FOR SUPPLIES	101213169	916.07	916.07
112976	MICRO K12CONNECTED.COM	09/16/2013	0448636-IN	Lamp replacement for Projectors	111213061	1,564.42	1,564.42
112977	MILLER PAINT COMPANY	09/16/2013	27632281	OPEN PURCHASE ORDER FOR 2012-2013 FOR SUPPLIES	101213178	593.77	746.79
			27633727	OPEN PURCHASE ORDER FOR 2012-2013 FOR SUPPLIES	101213178	153.02	
112978	MSR NORTHWEST	09/16/2013	0101850-IN	Calibration of Audiometers.	91213114	349.54	349.54
112979	PIERCE COUNTY REFUSE	09/16/2013	4240562	OPEN PO FOR GARBAGE AND RECYCLING. DO NOT FAX PO.	81213056	76.74	76.74
112980	PUGET SOUND ENERGY	09/16/2013	200001934278	OPEN PO FOR GAS AND ELECTRICITY CHARGES. DO NOT FAX PO.	81213053	35.35	3,091.31

Check Nbr	Vendor Name	Check Date	Invoice Number	Invoice Desc	PO Number	Invoice Amount	Check Amount
			200002143960	OPEN PO FOR GAS AND ELECTRICITY CHARGES. DO NOT FAX PO.	81213053	-1,502.02	
			200008146082	OPEN PO FOR GAS AND ELECTRICITY CHARGES. DO NOT FAX PO.	81213053	65.53	
			200018787412	OPEN PO FOR GAS AND ELECTRICITY CHARGES. DO NOT FAX PO.	81213053	939.23	
			200022057323	OPEN PO FOR GAS AND ELECTRICITY CHARGES. DO NOT FAX PO.	81213053	35.35	
			200023874882	OPEN PO FOR GAS AND ELECTRICITY CHARGES. DO NOT FAX PO.	81213053	3,517.87	
112981	REALITYWORKS	09/16/2013	0000041348	Realityworks repairs - SN RJFPL06062881 Paritally detached head of baby, standard repair cost	2371213092	163.01	163.01
112982	SAXTON BRADLEY	09/16/2013	35576	LABOR TO REMOVE EXISTING & INSTALL NEW STEILACOOM HIGH SCHOOL GYM LOCKERS	101213188	8,175.46	8,175.46
112983	SHARON K SCHILLER	09/16/2013	REIMBURS COSTCO	8/19/13 COSTCO - FOR SENTINEL DAY VOLUNTEER LUNCH 8/20 ALBERTSONS VOLUNTEER LUNCH	0	128.21	128.21
112984	SODEXO INC & AFFILIATES	09/16/2013	1000700427	OPEN PO FOR FOOD SERVICE. DO NOT FAX	81213113	2,844.48	2,844.48
112985	SPORTSFIELD SPECIALTIES INC	09/16/2013	43787	Dugouts for SHS	91213116	4,157.20	4,157.20
112986	STAPLES BUSINESS ADVANTAGE	09/16/2013	T2567009-2	OPEN PURCHASE ORDER FOR 2012-2013 SCHOOL YEAR FOR SUPPLIES	101213177	20.02	1,755.34
			T2573799	OPEN PURCHASE ORDER FOR 2012-2013 SCHOOL YEAR FOR SUPPLIES	101213177	277.11	

Check Nbr	Vendor Name	Check Date	Invoice Number	Invoice Desc	PO Number	Invoice Amount	Check Amount
			t2573799-2	OPEN PURCHASE ORDER FOR 2012-2013 SCHOOL YEAR FOR SUPPLIES	101213177	71.74	
			T2582554	OPEN PURCHASE ORDER FOR 2012-2013 SCHOOL YEAR FOR SUPPLIES	101213177	4.97	
			T2582554-1	OPEN PURCHASE ORDER FOR 2012-2013 SCHOOL YEAR FOR SUPPLIES	101213177	19.89	
			T2586679	OPEN PURCHASE ORDER FOR 2012-2013 SCHOOL YEAR FOR SUPPLIES	101213177	1,361.61	
112987	STEILACOOM SCHOOL DISTRICT	09/16/2013	AUGUST 2013 REV TRAC	REV TRACK FEES TO BE REIMBURSED BACK INTO THE GENERAL FUND. DO NOT FAX	81213121	895.47	895.47
112988	TACOMA COMMUNITY COLLEGE	09/16/2013	519	12/13 RUNNING START OPEN PO.DO NOT FAX	81213153	543.48	543.48
112989	TANNER ELECTRIC	09/16/2013	72131000	ELECTRIC CHARGES FOR ANDERSON ISLAND FOR THE 12/13 SY. DO NOT FAX.	81213109	304.81	304.81
112990	TED BROWN MUSIC CO	09/16/2013	904864	SPRING BASS 3/4	0	822.41	822.41
112991	TOWN OF STEILACOOM	09/16/2013	01-00720.0	OPEN PO FOR ELECTRICITY FOR STEILACOOM. DO NOT FAX PO.	81213054	818.82	11,590.62
			01-00722.0	OPEN PO FOR ELECTRICITY FOR STEILACOOM. DO NOT FAX PO.	81213054	75.03	
			01-00727.0	OPEN PO FOR ELECTRICITY FOR STEILACOOM. DO NOT FAX PO.	81213054	722.01	
			04-00360.0	OPEN PO FOR ELECTRICITY FOR STEILACOOM. DO NOT FAX PO.	81213054	581.53	
			04-00361.0	OPEN PO FOR ELECTRICITY FOR STEILACOOM. DO NOT FAX PO.	81213054	729.42	

Check Nbr	Vendor Name	Check Date	Invoice Number	Invoice Desc	PO Number	Invoice Amount	Check Amount
			04-01690.1	OPEN PO FOR ELECTRICITY FOR STEILACOOM. DO NOT FAX PO.	81213054	151.00	
			04-01692.0	OPEN PO FOR ELECTRICITY FOR STEILACOOM. DO NOT FAX PO.	81213054	107.63	
			05-00010.0	OPEN PO FOR ELECTRICITY FOR STEILACOOM. DO NOT FAX PO.	81213054	380.70	
			05-00020.0	OPEN PO FOR ELECTRICITY FOR STEILACOOM. DO NOT FAX PO.	81213054	494.56	
			05-00025.0	OPEN PO FOR ELECTRICITY FOR STEILACOOM. DO NOT FAX PO.	81213054	390.03	
			05-00030.0	OPEN PO FOR ELECTRICITY FOR STEILACOOM. DO NOT FAX PO.	81213054	157.19	
			05-00040.0	OPEN PO FOR ELECTRICITY FOR STEILACOOM. DO NOT FAX PO.	81213054	87.66	
			08-01800.0	OPEN PO FOR ELECTRICITY FOR STEILACOOM. DO NOT FAX PO.	81213054	138.37	
			08-01805.0	OPEN PO FOR ELECTRICITY FOR STEILACOOM. DO NOT FAX PO.	81213054	42.20	
			08-01810.0	OPEN PO FOR ELECTRICITY FOR STEILACOOM. DO NOT FAX PO.	81213054	6,714.47	
112992	TRANE COMMERCIAL SYSTEMS	09/16/2013	8234126R1	OPEN PURCHASE ORDER FOR SUPPLIES FOR 2012-2013	101213184	480.89	480.89
112993	TRUSTEED PLANS SERVICE CORP	09/16/2013	0072090-IN	OPEN PO TRUSTEED PLANS SERVICE CORPS	81213037	8,119.21	11,925.75
			0072193-IN	OPEN PO TRUSTEED PLANS SERVICE CORPS	81213037	3,806.54	

	0	Manual	Checks For a Total of	0.00
	0	Wire Transfer	Checks For a Total of	0.00
	0	ACH	Checks For a Total of	0.00
	46	Computer	Checks For a Total of	109,149.62
Total For	46	Manual, Wire Tran, ACH & Computer	Checks	109,149.62
Less	0	Voided	Checks For a Total of	0.00
			Net Amount	109,149.62

The following vouchers, as audited and certified by the Auditing Officer as required by RCW 42.24.080, and those expense reimbursement claims certified as required by RCW 42.24.090, are approved for payment. Those payments have been recorded on this listing which has been made available to the board.

As of September 25, 2013, the board, by a _____ vote, approves payments, totaling \$6,890.16. The payments are further identified in this document.

Total by Payment Type for Cash Account, ASB WARRANTS OUTSTANDING:

Warrant Numbers 401346 through 401353, totaling \$6,890.16

Secretary _____ Board Member _____

Board Member _____ Board Member _____

Board Member _____ Board Member _____

Check Nbr	Vendor Name	Check Date	Invoice Number	Invoice Desc	PO Number	Invoice Amount	Check Amount
401346	AWSP	09/23/2013	WASC MEMB DUES	MEMBERSHIP DUES 13/14SY	0	60.00	60.00
401347	CASCADE BAGEL & DELI, INC	09/23/2013	125444	4012 Student Store Cascade Bagel OPEN PO not to exceed \$3000.00 for 2013-14 School Year	4061314009	34.30	205.80
			125464	4012 Student Store Cascade Bagel OPEN PO not to exceed \$3000.00 for 2013-14 School Year	4061314009	34.30	
			125487	4012 Student Store Cascade Bagel OPEN PO not to exceed \$3000.00 for 2013-14 School Year	4061314009	34.30	
			125513	4012 Student Store Cascade Bagel OPEN PO not to exceed \$3000.00 for 2013-14 School Year	4061314009	34.30	
			125557	4012 Student Store Cascade Bagel OPEN PO	4061314009	34.30	

Check Nbr	Vendor Name	Check Date	Invoice Number	Invoice Desc	PO Number	Invoice Amount	Check Amount
				not to exceed \$3000.00 for 2013-14 School Year			
			125577	4012 Student Store Cascade Bagel OPEN PO	4061314009	34.30	
				not to exceed \$3000.00 for 2013-14 School Year			
401348	COSTCO	09/23/2013	256685414	4012 Student Store Costco Open PO not to exceed \$7000.00 For 2013-14 School Year	4061314008	415.20	1,245.63
			256752950	4012 Student Store Costco Open PO not to exceed \$7000.00 For 2013-14 School Year	4061314008	830.43	
401349	EK BEVERAGES	09/23/2013	370149	4012 Student Store EK Beverage Open PO for School Year 2013-14 Not to exceed \$3000.00	4061314005	283.50	283.50
401350	FOLLETT LIBRARY RESOURCES	09/23/2013	869149F-2	16 library books	4051213075	225.69	225.69
401351	HALFON CANDY COMPANY	09/23/2013	520395	4012 Student Store Halfon Open PO for 2013-14 not to exceed \$3000.00	4061314006	164.54	164.54
401352	SUNRISE DISTRIBUTION, INC.	09/23/2013	STHS007	4012 Student Store Island Oasis/ Sunrise Distribution Open PO for 2013-14 School Year Not to exceed \$4000.00	4061314007	1,007.00	1,007.00
401353	UCA SUMMER CAMPS	09/23/2013	561579 INV006	4003 Cheer Camp Registration for 12 students	4061314011	3,698.00	3,698.00
				8 Computer	Check(s) For a Total of		6,890.16

	0	Manual	Checks For a Total of	0.00
	0	Wire Transfer	Checks For a Total of	0.00
	0	ACH	Checks For a Total of	0.00
	8	Computer	Checks For a Total of	6,890.16
Total For	8	Manual, Wire Tran, ACH & Computer Checks		6,890.16
Less	0	Voided	Checks For a Total of	0.00
			Net Amount	6,890.16

The following vouchers, as audited and certified by the Auditing Officer as required by RCW 42.24.080, and those expense reimbursement claims certified as required by RCW 42.24.090, are approved for payment. Those payments have been recorded on this listing which has been made available to the board.

As of September 25, 2013, the board, by a _____ vote, approves payments, totaling \$4,215.44. The payments are further identified in this document.

Total by Payment Type for Cash Account, GF WARRANTS OUTSTANDING:
Warrant Numbers 113003 through 113012, totaling \$4,215.44

Secretary _____ Board Member _____
Board Member _____ Board Member _____
Board Member _____ Board Member _____

Check Nbr	Vendor Name	Check Date	Invoice Number	Invoice Desc	PO Number	Invoice Amount	Check Amount
113003	BELLEVUE SD AP INSTITUTE	09/23/2013	AR361978	Annual AP Institute Registration Kelly McClellan	4311213145	780.00	780.00
113004	CAROLINA BIOG SERVICE	09/23/2013	48499187 RI	6TH GRADE SCIENCE TEAM SUPPLIES	2371213111	106.77	106.77
113005	CHEVRON & TEXACO CARD SERVICES	09/23/2013	7898030544-583779	OPEN PO FOR FUEL. DO NOT FAX	81213050	-2,922.63	1,235.81
			7898030544/583779	OPEN PO FOR FUEL. DO NOT FAX	81213050	4,158.44	
113006	DANDE CO	09/23/2013	MA090913-2	supplies	281213035	91.16	91.16
113007	KING COUNTY DIRECTORS ASSN	09/23/2013	3720385	Supplies for HAVERKAMP, Cart #609797 (req # PIO05101333)	2371213094	40.26	40.26
113008	PATTERSON, JOSEPHINE LORAIN	09/23/2013	6/19 EVAL SYSTEMS	6/19/13 EVAL SYSTEMS TEST FEE WEST-E MIDDLE LEVEL MATH TEST	0	155.00	155.00
113009	SEATTLE REPERATORY THEATRE	09/23/2013	BTic Workshop	Bringing Theater into the Classroom, workshop	2371213104	450.00	450.00
113010	SLATER, MICHAEL	09/23/2013	6/15 IKEA	SECOND GRADE SUPPLIES -- SLATER (BOOKCASES)	1621213091	240.90	240.90
113011	US BANCORP	09/23/2013	236647335	OPEN PO FOR COPIER LEASES FOR SALTAR'S POINT, STEILACOOM H.S., AND CHLOE CLARK. DO NOT FAX PO.	81213058	1,058.94	1,058.94

Check Nbr	Vendor Name	Check Date	Invoice Number	Invoice Desc	PO Number	Invoice Amount	Check Amount
113012	USA MOBILITY WIRELESS INC	09/23/2013	W36618891	OPEN PO FOR PAGERS FOR MAIN DEPARTMENT. DO NOT FAX.	81213123	56.60	56.60
				10 Computer	Check(s) For a Total of		4,215.44

	0	Manual	Checks For a Total of	0.00
	0	Wire Transfer	Checks For a Total of	0.00
	0	ACH	Checks For a Total of	0.00
	10	Computer	Checks For a Total of	4,215.44
Total For	10	Manual, Wire Tran, ACH & Computer Checks		4,215.44
Less	0	Voided	Checks For a Total of	0.00
			Net Amount	4,215.44

Stellacoom Historical School District No. 1
Certificated Personnel Report

Personnel Report 9-25-13							
Name	Position	FTE	Location	Effective Date	Actions	Stipend Amount	Comment
Thomas Alissa	Teacher 3rd Grade (AM)	0.50	Chloe Clark	9/26/2013	New Hire		

Steilacoom Historical School District No. 1
Classified Personnel Report

Personnel Report 9-25-13							
Name	Position	Hours	Location	Effective Date	Action	Stipend Amount	Comment
Rodriguez Wanda	Student Services Clerk	8	District Office	9/17/2013	Resignation		
							resigning 3.25 Classified Para hours to fulfill
Thomas Alissa	Para Educator Pre-School	3.25	Chloe Clark	9/26/2013	Resignation		Certificated .50 FTE 3rd grade teaching position at Chloe Clark
Van Nuys Jacquelyn	Para Educator Special Education	6.5	Chloe Clark	9/26/2013	New Hire		Student Specific

Steilacoom Historical School District No. 1
Coaching Personnel Report

Personnel Report 9-25-13						
Name	Position	Location	Effective Date	Action	Stipend Amount	Comment
Johnston Thomas	Wrestling Head Coach	High	11/18/2013	Stipend	5,595.50	
Los Banos Lopaka	Wrestling Assistant Coach	High	11/18/2013	Stipend	4,196.63	
McDonald Michael	Football Assistant Coach	High	8/21/2013	Stipend	4,079.25	

Steilacoom Historical School District Board of Directors

REGULAR BOARD MEETING

Date: September 25, 2013

TO: Members, Steilacoom Historical School District Board of Directors

ISSUE: x **ACTION Approval of Grant – Highly Capable Program**
 INFORMATION

BACKGROUND INFORMATION:

The Highly Capable Program offers funding to school districts to provide educational opportunities for the highly capable student population. To receive these funds, districts must complete an application (form package 217) and receive approval from OSPI.

According to Washington Administrative Code 392-170-025, this application must be approved annually by the School Board.

FISCAL IMPLICATIONS:

This grant provides additional revenue to the District to be spent on serving students with highly capable needs.

RECOMMENDED DECISION:

It is the recommendation of the Superintendent to approve the 2013-14 Highly Capable Students Program grant application.

Report prepared by: Julie Wright, Director of Teaching and Learning

217 Highly Capable Students Program**Fiscal Year:** 13-14**Milestone:** Under Org. Review (Printed 9/13/2013)**District:** Steilacoom Hist. School District**Organization Code:** 27001**ESD:** Puget Sound Educational Service District 121**Page 1****Highly Capable Program Assurances**

RCW 28A.185.020 — The Legislature finds that, for highly capable students, access to accelerated learning and enhanced instruction is access to a basic education.

Important! Districts may use the 2013-14 school year as a transition year for developing a Grades K-12 HCP. For districts using the transition year to develop a Grades K-12 HCP, the signed assurances reflect that the program policy, procedures and services being designed will meet assurance statements 1-16 listed below.

- ☒ Check if district will use 2013-14 as a planning/transition year. If this box is checked, signature only is required for this page. See page 2 for further instructions for completing the form package.

Each Local Education Agency (LEA) plan shall provide assurance that the LEA will ensure:

1. The Highly Capable Program (HCP) annual plan, assurances, and budget are annually approved by the district's board of directors (WAC 392-170-025).
2. The district has a written HCP policy and procedures for Grades K-12 for:
 - Nomination (WAC 392-170-045)
 - Assessment Process (WAC 392-170-055)
 - System for the selection of the most highly capable (WAC 392-170-075)
 - Appealing the multidisciplinary selection committee's decision (WAC 392-170-076)
3. Annual notification is made to parents and students before any major identification activity takes place (WAC 392-170-042).
4. The identification process for determining student eligibility for the highly capable program, takes into consideration and adheres to the use of:
 - The definition—Students who are highly capable (WAC 392-170-035)
 - The definition—Learning characteristics (WAC 392-170-036)
 - Nomination process for highly capable students (WAC 392-170-045)
 - Nomination procedure may include screening procedures (WAC 392-170-045)
 - Multiple, objective identification criteria is used to identify those students who are most highly capable (RCW 28A.150.020, 030)
 - Assessment process for selection as highly capable student (WAC 392-170-055)
 - Nondiscrimination in the use of tests (WAC 392-170-060)
5. The district's process for the selection of the most highly capable students includes these requirements:
 - The use of a multidisciplinary selection committee (WAC 392-170-070)
 - Shall be based on a selection system that determines which students are the most highly capable as defined under WAC 392-170-055, and other data collected in the assessment process (WAC 392-170-075)
 - Shall not violate federal and state civil rights laws including, without limitation, chapters 28A.640 and 28A.642 RCW

6. The district obtains written parent/legal guardian permission prior to conducting assessment(s) to determine eligibility for participation in the programs for highly capable students (WAC 392-170-047).
7. Written permission, signed by parent/legal guardian, must be obtained before placement of a student in the Highly Capable Program and before programs are initiated for an identified highly capable student (WAC 392-170-047).
8. The district makes a variety of appropriate program services available to identified HCP students, which take into account such student's unique needs and capabilities. Once services are started, a continuum of services is provided to the student from Grades K-12. Districts periodically review services for each student to ensure that the services are appropriate (WAC 392-170-078, 080).
9. The district keeps on file a description of the educational programs provided for students selected (WAC 392-170-080).
10. Quality assurance measures are in place for coding students who have been assessed and identified as highly capable on the state assessment (RCW 28A.320.175).
11. Quality assurance measures are in place for assigning gifted values for CEDARS data upload.
12. The district participates in program review and monitoring activities no less than once every five years (WAC 392-170-087).
13. The district conducts program evaluation and makes changes to the HCP as needed (WAC 392-170-030, 087, 090).
14. The district will fulfill all responsibilities consistent with WAC 392-170.
15. The district will use all HCP funds to implement its approved HCP application and program plan.
16. The district will submit the annual plan (form package 217) by August 30, 2013.

Check this box: <input checked="" type="checkbox"/>	District officials have read and understand these assurances.
Name of Authorized Representative:	Julie Wright
Position/Title of Authorized Representative:	Director of Teaching and Learning
Date: (sample format 7/1/13)	8/10/13
<input type="checkbox"/> Check if your district is classified as a second-class district (RCW 28A.300.065). NOTE: For districts classified as second-class, pages 1, 2, and page 6 (Annual School Board Approval Section) constitute the annual plan. Mark pages 3-5 of this form package "Not Applicable."	

Highly Capable Program Coordinator

Name: Barbara Olson
Title: Highly Capable Coordinator
Location: Saltar's Point Elementary
Email Address: bolson@steilacoom.k12.wa.us
Phone Number: 253-983-2217
Fax Number:

Highly Capable Program Parent Organization

Is there a parent organization in your area? No

Contact Name:

Organization:

Email Address:

Phone Number:

Highly Capable Program Transition Year Plan/Status

Alert! The 2013–14 school year is a transition year for districts to develop a Highly Capable Program (HCP) and services for Grades K-12 consistent with the requirements of WAC 392–170.

The HCP is to be fully implemented and serving identified HCP students from Grades K-12 at the beginning of the 2014–15 school year.

Transition Year Status

Select the description that best describes your district's transition year status.

☒ District meets the requirements for second-class district

For districts without a current HCP, the district may use the 2013–14 school year as a transition for developing the HCP policy, procedures, and services. For districts with a current HCP, the district may use a portion of the HCP funds to continue to offer services to identified students and for a transition year to develop HCP policy, procedures, and services for Grades K-12.

- Complete the Assurances page.
- Select Second-Class District status for page 2. District is not required to provide a Transition Year Plan.
- Mark pages 3-5 "Not Applicable."
- Complete the Annual School Board Approval section on page 6.

☐ District does not have a current HCP

The district will be using the 2013–14 school year as a transition for developing the HCP policy, procedures, and services.

- Complete the Assurances page.
- Complete the Transition Year Plan below.
- Mark pages 3-5 "Not Applicable."
- Complete the Annual School Board Approval section on page 6.

☐ District has a current HCP and will use a transition year to expand to include Grades K-12

The district will use a portion of the HCP funds to continue to offer services to identified students and for a transition year to develop HCP policy, procedures, and services for Grades K-12.

- Complete the Assurances page.
- Complete the Transition Year Plan below.
- Complete pages 3-5 for the current program provided to identified students.
- Complete page 6 – if changes are made to documents during the transition year, revised documents will be uploaded on next year's application.

☐ District has a HCP continuum for Grades K-12 and will not need a transition year

The district will continue to operate the HCP in Grades K-12 and will not use funds for transition year

activities unless needed for updating policy, procedures, services, and/or documents to comply with WAC 392-170 changes.

- Complete the Assurances page.
- Provide a transition year plan if the district will be using the transition year for revising program, services, and/or documents to comply with WAC changes.
- Complete pages 3-5 for the district's Grades K-12 HCP.
- Complete page 6 – if changes are made to documents during the transition year, revised documents will be uploaded on next year's application.

Transition Year Plan

Describe the district's plan for how funds will be used to support the HCP Transition Year Plan. Provide detailed activities that will take place to develop HCP policy, procedures, and services during the transition year. The HCP must be fully implemented and serve students Grades K-12 at the beginning of the 2014-15 school year.

The district will work with the superintendent, multidisciplinary selection committee members, and parent and community groups to develop a k-12 highly capable program. Currently, SHSD has rich AP programs at the high school and looks forward to creating a continuous k-12 plan.

Estimated Allocation

Allocations for the highly capable program are based upon providing an additional 2.1590 hours per week of instruction for a class size of 15 student FTE. The enrollment basis for this calculation is 2.314% of current year total enrollment with running start. The resulting enrollment figure is used to calculate the number of teachers needed to provide the additional instructional time to those students. Funding is received as salary and benefits for the number of teachers generated by the formula.

The district's monthly allocation will be adjusted throughout the grant period based on changes in reported enrollment. Also, there is no carryover provision for Highly Capable Program grants. Please work with your business manager to monitor any changes to your allocation during the year.

Page 3**Projected Students To Be Served**

Alert! Pages 3-5 are to be completed by districts with a current program already in place and being provided to identified students. Please see Transition Year Status (page 2) to determine if your district needs to complete pages 3-5. Mark pages 3-5 "Not Applicable" if not required to complete pages. All districts must complete page 6 according to the transition year plan/status page instructions (page 2).

Students projected to be served by grade level with State Highly Capable Program grant

K	1	2	3	4	5	6	7	8	9	10	11	12	Total
		8	20	20	24								72

Note: The 2.314% is the percentage established by the legislature in 2007 to be used in the formula for calculating each district's allocation. The percentage is unrelated to the number of students the district may serve. The district has local authority to establish policy and procedures for the eligibility criteria, assessment process, and selection system for determining which students will be served by the district's HCP.

Student Nomination (WAC 392-170-045)

Describe the district Grades K-12 nomination process. Include a timeframe for when nominations are accepted.

Note: Nomination/referral form(s) will be uploaded on page 6.

- Our district notifies all parents of the process and then seeks nominations from parents and guardians of current 1st, 2nd, 3rd, and 4th grade students who are well above average academically, who are willing to learn new content, be challenged and are self-motivated. Nominations are accepted for approximately 6 weeks.

Assessment Process (WAC 392-170-055)

☒ Check this box if the district is redesigning the assessments used in the identification process during the transition year. If this box is checked, proceed to page 4 without completing the remainder of this Assessment Process section.

For districts maintaining their current identification practices during the 2013-14 school year, districts may continue using multiple criteria for identification of students who are highly capable. Identify assessments used in the identification process. If "other" is selected, provide the name of the assessment instrument used.

Cognitive Ability

- ☐ Cognitive Ability Test (COGAT)
 - ☐ Raven
 - ☐ WISC (Enter WISC Version)
 - ☐ Otis-Lennon
 - ☐ Other
- Specify Other:

Academic Achievement

- ☐ State Assessment
 - ☐ NWEA MAP
 - ☐ ITBS
 - ☐ ITED
 - ☐ Other
- Specify Other:
-

Creativity

- ☐ Structure of Intellect-Divergent Thinking Short Form (SOI)
 - ☐ Structure of Intellect-Form L (SOIL)
 - ☐ Torrance Test of Creative Behaviors
 - ☐ Renzulli Checklist
 - ☐ Other
- Specify Other:

Other Evaluation Materials

- ☐ Teacher Rating Scale
 - ☐ Parent Rating Scale
 - ☐ Report Card
 - ☐ Work Sample(s)
 - ☐ Other
- Specify Other:
-

Page 4

Highly Capable Program Review and Monitoring (WAC 392-170-087)

Evaluation Plan for Effectiveness of Identification Process

Describe the district's plan for evaluating the effectiveness of the district's process to identify highly capable students and procedures for reaching out to highly capable students with diverse talents and from diverse backgrounds.

Our district is currently developing an evaluation process to ensure proper identification of all students who are highly capable. We will begin to meet biannually to review and reflect upon our identification process and its effectiveness.

Evaluation Plan for Meeting the Academic Needs of Highly Capable Students

Describe the district's plan for evaluating how well the district is meeting the academic needs of the identified students. Include the assessment data and other indicators used in the evaluation process.

During the transition year, we will be refining our program to ensure that we are meeting the academic needs of our highly capable students K-12. We will also focus on building an evaluation framework, which will include data, observations and surveys to measure our effectiveness.

Evaluation Plan for Use of Program Expenditures

Describe the district's plan for evaluating expenditures and effectiveness of using funds to enrich or expand opportunities for HCP students.

Director of Teaching and Learning will evaluate and monitor the budget with the business manager on a monthly basis to ensure all expenditures are allowable under the guidelines of the program.

Professional Development Activities (WAC 392-170-030)

Indicate planned professional development activities for educators of students who are highly capable and general education staff. (Check all that apply.)

- ☐ Advanced Placement Training
- ☐ Council for Exceptional Children-Talented and Gifted Conference and/or Webinars
- ☐ National Association of Gifted Children Conference and/or Webinars
- ☐ Northwest Gifted Child Association Conference and/or Webinars
- ☒ OSPI K-20 and/or Webinars
- ☐ Supporting Emotional Needs of Gifted Conference or Webinars
- ☒ Washington Association of Educators for Talented and Gifted (WAETAG) Fall Conference
- ☒ WAETAG/ESD Trainings

☐ Other
Specify Other:

Page 5

**Highly Capable Program Services - Grades K-12 Continuum of Services
(WAC 392-170-078, 080)**

Identify the program option(s) used to serve highly capable students Grades K-12.

Regular Classroom-Based Services/Programs	K	1	2	3	4	5	6	7	8	9	10	11	12
Curriculum Compacting	<input type="checkbox"/>	<input type="checkbox"/>	<input type="checkbox"/>	<input type="checkbox"/>	<input type="checkbox"/>	<input type="checkbox"/>	<input type="checkbox"/>	<input type="checkbox"/>	<input type="checkbox"/>	<input type="checkbox"/>	<input type="checkbox"/>	<input type="checkbox"/>	<input type="checkbox"/>
Differentiated Instruction	<input type="checkbox"/>	<input type="checkbox"/>	<input type="checkbox"/>	<input type="checkbox"/>	<input type="checkbox"/>	<input type="checkbox"/>	<input type="checkbox"/>	<input type="checkbox"/>	<input type="checkbox"/>	<input type="checkbox"/>	<input type="checkbox"/>	<input type="checkbox"/>	<input checked="" type="checkbox"/>
Enrichment	<input type="checkbox"/>	<input type="checkbox"/>	<input type="checkbox"/>	<input type="checkbox"/>	<input type="checkbox"/>	<input type="checkbox"/>	<input type="checkbox"/>	<input type="checkbox"/>	<input type="checkbox"/>	<input type="checkbox"/>	<input type="checkbox"/>	<input type="checkbox"/>	<input type="checkbox"/>
Flexible or Cluster Grouping	<input type="checkbox"/>	<input type="checkbox"/>	<input type="checkbox"/>	<input type="checkbox"/>	<input type="checkbox"/>	<input type="checkbox"/>	<input type="checkbox"/>	<input type="checkbox"/>	<input type="checkbox"/>	<input type="checkbox"/>	<input type="checkbox"/>	<input type="checkbox"/>	<input type="checkbox"/>
Independent Projects	<input type="checkbox"/>	<input type="checkbox"/>	<input type="checkbox"/>	<input type="checkbox"/>	<input type="checkbox"/>	<input type="checkbox"/>	<input type="checkbox"/>	<input type="checkbox"/>	<input type="checkbox"/>	<input type="checkbox"/>	<input type="checkbox"/>	<input type="checkbox"/>	<input type="checkbox"/>
Supplemental Instruction in Area of Interest	<input type="checkbox"/>	<input type="checkbox"/>	<input type="checkbox"/>	<input type="checkbox"/>	<input type="checkbox"/>	<input type="checkbox"/>	<input type="checkbox"/>	<input type="checkbox"/>	<input type="checkbox"/>	<input type="checkbox"/>	<input type="checkbox"/>	<input type="checkbox"/>	<input type="checkbox"/>
Honors	<input type="checkbox"/>	<input type="checkbox"/>	<input type="checkbox"/>	<input type="checkbox"/>	<input type="checkbox"/>	<input type="checkbox"/>	<input type="checkbox"/>	<input type="checkbox"/>	<input type="checkbox"/>	<input type="checkbox"/>	<input type="checkbox"/>	<input type="checkbox"/>	<input type="checkbox"/>
Advanced Placement (AP)/International Baccalaureate (IB)	<input type="checkbox"/>	<input type="checkbox"/>	<input type="checkbox"/>	<input type="checkbox"/>	<input type="checkbox"/>	<input type="checkbox"/>	<input type="checkbox"/>	<input type="checkbox"/>	<input type="checkbox"/>	<input checked="" type="checkbox"/>	<input checked="" type="checkbox"/>	<input checked="" type="checkbox"/>	<input checked="" type="checkbox"/>
Pre-AP/IB Skills	<input type="checkbox"/>	<input type="checkbox"/>	<input type="checkbox"/>	<input type="checkbox"/>	<input type="checkbox"/>	<input type="checkbox"/>	<input type="checkbox"/>	<input type="checkbox"/>	<input type="checkbox"/>	<input type="checkbox"/>	<input type="checkbox"/>	<input type="checkbox"/>	<input type="checkbox"/>
Other	<input type="checkbox"/>	<input type="checkbox"/>	<input type="checkbox"/>	<input type="checkbox"/>	<input type="checkbox"/>	<input type="checkbox"/>	<input type="checkbox"/>	<input type="checkbox"/>	<input type="checkbox"/>	<input type="checkbox"/>	<input type="checkbox"/>	<input type="checkbox"/>	<input type="checkbox"/>
Specify Other:													

Unique HCP Services/Programs	K	1	2	3	4	5	6	7	8	9	10	11	12
Self-Contained Classroom	<input type="checkbox"/>	<input type="checkbox"/>	<input type="checkbox"/>	<input type="checkbox"/>	<input type="checkbox"/>	<input type="checkbox"/>	<input type="checkbox"/>	<input type="checkbox"/>	<input type="checkbox"/>	<input type="checkbox"/>	<input type="checkbox"/>	<input type="checkbox"/>	<input type="checkbox"/>
Pull-Out Program	<input type="checkbox"/>	<input type="checkbox"/>	<input checked="" type="checkbox"/>	<input checked="" type="checkbox"/>	<input checked="" type="checkbox"/>	<input checked="" type="checkbox"/>	<input type="checkbox"/>	<input type="checkbox"/>	<input type="checkbox"/>	<input type="checkbox"/>	<input type="checkbox"/>	<input type="checkbox"/>	<input type="checkbox"/>
Online Course	<input type="checkbox"/>	<input type="checkbox"/>	<input type="checkbox"/>	<input type="checkbox"/>	<input type="checkbox"/>	<input type="checkbox"/>	<input type="checkbox"/>	<input type="checkbox"/>	<input type="checkbox"/>	<input type="checkbox"/>	<input type="checkbox"/>	<input type="checkbox"/>	<input type="checkbox"/>
Other	<input type="checkbox"/>	<input type="checkbox"/>	<input type="checkbox"/>	<input type="checkbox"/>	<input type="checkbox"/>	<input type="checkbox"/>	<input type="checkbox"/>	<input type="checkbox"/>	<input type="checkbox"/>	<input type="checkbox"/>	<input type="checkbox"/>	<input type="checkbox"/>	<input type="checkbox"/>
Specify Other:													

Acceleration Services/Programs	K	1	2	3	4	5	6	7	8	9	10	11	12
Advanced Subject Placement	<input type="checkbox"/>	<input type="checkbox"/>	<input type="checkbox"/>	<input type="checkbox"/>	<input type="checkbox"/>	<input type="checkbox"/>	<input type="checkbox"/>	<input type="checkbox"/>	<input type="checkbox"/>	<input type="checkbox"/>	<input type="checkbox"/>	<input type="checkbox"/>	<input type="checkbox"/>
Grade Level Advancement	<input type="checkbox"/>	<input type="checkbox"/>	<input type="checkbox"/>	<input type="checkbox"/>	<input type="checkbox"/>	<input type="checkbox"/>	<input type="checkbox"/>	<input type="checkbox"/>	<input type="checkbox"/>	<input type="checkbox"/>	<input type="checkbox"/>	<input type="checkbox"/>	<input type="checkbox"/>

Early Entrance/Access to College Level Courses	<input type="checkbox"/>	<input type="checkbox"/>	<input type="checkbox"/>	<input type="checkbox"/>	<input type="checkbox"/>	<input type="checkbox"/>	<input type="checkbox"/>	<input type="checkbox"/>	<input type="checkbox"/>	<input type="checkbox"/>	<input type="checkbox"/>	<input type="checkbox"/>	<input type="checkbox"/>
Other	<input type="checkbox"/>	<input type="checkbox"/>	<input type="checkbox"/>	<input type="checkbox"/>	<input type="checkbox"/>	<input type="checkbox"/>	<input type="checkbox"/>	<input type="checkbox"/>	<input type="checkbox"/>	<input type="checkbox"/>	<input type="checkbox"/>	<input type="checkbox"/>	<input type="checkbox"/>
Specify Other:													

Non-Traditional Services/Programs	K	1	2	3	4	5	6	7	8	9	10	11	12
Mentorship	<input type="checkbox"/>	<input type="checkbox"/>	<input type="checkbox"/>	<input type="checkbox"/>	<input type="checkbox"/>	<input type="checkbox"/>	<input type="checkbox"/>	<input type="checkbox"/>	<input type="checkbox"/>	<input type="checkbox"/>	<input type="checkbox"/>	<input type="checkbox"/>	<input type="checkbox"/>
Collaborative Partnership with Industry	<input type="checkbox"/>	<input type="checkbox"/>	<input type="checkbox"/>	<input type="checkbox"/>	<input type="checkbox"/>	<input type="checkbox"/>	<input type="checkbox"/>	<input type="checkbox"/>	<input type="checkbox"/>	<input type="checkbox"/>	<input type="checkbox"/>	<input type="checkbox"/>	<input type="checkbox"/>
Cooperative Arrangement with ESD	<input type="checkbox"/>	<input type="checkbox"/>	<input type="checkbox"/>	<input type="checkbox"/>	<input type="checkbox"/>	<input type="checkbox"/>	<input type="checkbox"/>	<input type="checkbox"/>	<input type="checkbox"/>	<input type="checkbox"/>	<input type="checkbox"/>	<input type="checkbox"/>	<input type="checkbox"/>
Cooperative Arrangement with Other District(s)	<input type="checkbox"/>	<input type="checkbox"/>	<input type="checkbox"/>	<input type="checkbox"/>	<input type="checkbox"/>	<input type="checkbox"/>	<input type="checkbox"/>	<input type="checkbox"/>	<input type="checkbox"/>	<input type="checkbox"/>	<input type="checkbox"/>	<input type="checkbox"/>	<input type="checkbox"/>
Academic Competitions	<input type="checkbox"/>	<input type="checkbox"/>	<input type="checkbox"/>	<input type="checkbox"/>	<input type="checkbox"/>	<input type="checkbox"/>	<input type="checkbox"/>	<input type="checkbox"/>	<input type="checkbox"/>	<input type="checkbox"/>	<input type="checkbox"/>	<input type="checkbox"/>	<input type="checkbox"/>
Summer Enrichment/Acceleration	<input type="checkbox"/>	<input type="checkbox"/>	<input type="checkbox"/>	<input type="checkbox"/>	<input type="checkbox"/>	<input type="checkbox"/>	<input type="checkbox"/>	<input type="checkbox"/>	<input type="checkbox"/>	<input type="checkbox"/>	<input type="checkbox"/>	<input type="checkbox"/>	<input type="checkbox"/>
Before/After School Services/Program	<input type="checkbox"/>	<input type="checkbox"/>	<input type="checkbox"/>	<input type="checkbox"/>	<input type="checkbox"/>	<input type="checkbox"/>	<input type="checkbox"/>	<input type="checkbox"/>	<input type="checkbox"/>	<input type="checkbox"/>	<input type="checkbox"/>	<input type="checkbox"/>	<input type="checkbox"/>
Other	<input type="checkbox"/>	<input type="checkbox"/>	<input type="checkbox"/>	<input type="checkbox"/>	<input type="checkbox"/>	<input type="checkbox"/>	<input type="checkbox"/>	<input type="checkbox"/>	<input type="checkbox"/>	<input type="checkbox"/>	<input type="checkbox"/>	<input type="checkbox"/>	<input type="checkbox"/>
Specify Other:													

Description of Program Services (WAC 392-170-078, 080)

Provide a written description of the district's HCP instructional program provided to selected students Grades K-12. Include details on how:

- Learning is accelerated
- Instruction is enhanced
- Educational opportunities take into account each student's unique needs and capabilities

Our Highly Capable Program currently serves Highly Capable students in grades 2-5 and focuses primarily on science and math. Students receive approximately one hour of enrichment per week. Instruction is designed to increase all students skills in the areas of critical and creative thinking, advanced research and creative productivity.

Subjects are accelerated at least two grade levels ahead in both science and math. In addition, projects and instruction are designed to engage student's as individuals,taking into consideration their unique abilities and interests.

Instructional Technology

Describe district use of instructional technology as a component of the HCP instructional program:

- List technology used
- Describe how it is used

Our district is committed to using technology to enhance the instruction and learning of our Highly Capable students. Smartboards and computers are available not only to the teacher, but to students as well. Students are encouraged to use technology to support and demonstrate their learning.

If the district is planning to purchase instructional technology for the HCP, explain item(s) to be purchased and connection to the instructional program provided to identified students.

Page 6

Annual School Board Approval of the Highly Capable Program Annual Plan (WAC 392-170-025)

Alert! All districts must upload Final Board Approved Minutes.

Enter Date of Board Approval: 9/25/2013

Board Approval of District Annual Plan (WAC 392-170-025)

The district's annual plan shall be approved by formal action of the district's Board of Directors. Upload Minutes showing application approval.

Program Documents

Alert! Districts with an existing program are to upload current documentation according to instructions on Transition Year page (page 2).

NOTE: For districts uploading documents, upload existing documentation. If changes are made to documents during the transition year, revised documents will be uploaded on next year's application.

Nomination/Referral Form

Upload the nomination/referral form(s) (WAC 392-170-045).

Parent Permission to Test Forms

WAC 392-170-047 requires parent permission to be obtained in writing prior to conducting HCP assessment and the notice must include:

- A full explanation of the procedures for identification of a student for entrance into the HCP
- An explanation of the appeal's process
- An explanation of the procedures to exit a student from the program
- Information on the district's program and the options that will be available to identified students

Upload permission to test notice.

Parent Permission to Place Student in District HCP Forms

WAC 392-170-047 requires parent permission to be obtained in writing prior to placing a student in the district's HCP before any special services and programs are started for an identified highly capable student and the notice must include:

- A full explanation of the procedures for identification of a student for entrance into the HCP
- An explanation of the appeal's process
- An explanation of the procedures to exit a student from the program
- Information on the district's program and the options that will be available to identified students

Upload permission to place notice.

☒ Check here if the district obtains written parent/guardian permission to test and to place on the same notice. Upload documentation one time only.

UPLOAD DOCUMENTS HERE

File names may *not* include symbols, including #.

Uploaded Files	Uploaded By	Uploaded At
recommendation form.docx	Barbara Olson	9/11/2013 10:09 AM

Make	Model	Type	SN	Service Started
HP	DC5800	Computer	MXL8250F2B	2008
HP	DC5800	Computer	MXL8250F36	2008
HP	DC5800	Computer	MXL8250F07	2008
HP	DC5800	Computer	MXL8250DXX	2008
HP	DC5800	Computer	MXL8250DZG	2008
HP	DC5800	Computer	MXL8250F1B	2008
HP	DC5800	Computer	MXL8250DY8	2008
HP	DC5800	Computer	MXL8250DY7	2008
HP	DC5800	Computer	MXL8250DXT	2008
HP	DC5800	Computer	MXL8250F16	2008
HP	DC5800	Computer	MXL8250F1C	2008
HP	DC5800	Computer	MXL8250DXW	2008
HP	DC5800	Computer	2UA93101V0	2008
HP	DC5800	Computer	2UA93101V6	2008
HP	DC5800	Computer	MXL8250DZ2	2008
HP	DC5800	Computer	MXL8250DZ1	2008
HP	DC5800	Computer	MXL8250DYP	2008
HP	DC5800	Computer	MXL8250DXV	2008
HP	DC5800	Computer	MXL8250DYV	2008
HP	DC5800	Computer	2UA93101V2	2008
HP	L1710	Monitor	3CQ9172C9H	2008
HP	L1710	Monitor	3CQ9172C90	2008
HP	L1710	Monitor	3CQ81946L2	2008
HP	L1710	Monitor	3CQ819477J	2008
HP	L1710	Monitor	3CQ9172C8P	2008
HP	L1710	Monitor	3CQ819464B	2008
HP	L1710	Monitor	3CQ81946L5	2008
HP	L1710	Monitor	3CQ9172C9Q	2008
HP	L1710	Monitor	3CQ819477D	2008
HP	L1710	Monitor	3CQ819476M	2008
HP	L1710	Monitor	3CQ9172C8M	2008
HP	L1710	Monitor	3CQ9172C9G	2008
HP	L1710	Monitor	3CQ819476Z	2008
HP	L1710	Monitor	3CQ819477M	2008
HP	L1710	Monitor	3CQ81946RW	2008
HP	L1710	Monitor	CNC822R6YX	2008
HP	L1710	Monitor	3CQ819477R	2008
HP	L1710	Monitor	3CQ9172C89	2008
HP	DC5800	Computer	MXL8250DZT	2008
HP	DC5800	Computer	MXL8250F0C	2008
HP	DC5800	Computer	MXL8250DYF	2008
HP	DC5800	Computer	MXL8250F06	2008
HP	DC5800	Computer	MXL8250F05	2008
HP	DC5800	Computer	2UA93101TN	2008
HP	DC5800	Computer	MXL8250F3R	2008
HP	DC5800	Computer	2UA93101TG	2008
HP	DC5800	Computer	MXL8250F41	2008

HP	DC5800	Computer	MXL8250F42	2008
HP	L1710	Monitor	3CQ81946YV	2008
HP	L1710	Monitor	3CQ81946KY	2008
HP	L1710	Monitor	3CQ819463K	2008
HP	L1710	Monitor	3CQ81946KB	2008
HP	L1710	Monitor	3CQ81946M9	2008
HP	L1710	Monitor	3CQ81946K4	2008
HP	L1710	Monitor	3CQ81946L3	2008
HP	L1710	Monitor	3CQ8194775	2008
HP	L1710	Monitor	3CQ9172C8T	2008
HP	L1710	Monitor	3CQ81946KC	2008
HP	L1710	Monitor	3CQ819476R	2008
HP	L1710	Monitor	3CQ81946K6	2008
HP	L1710	Monitor	3CQ819469N	2008
HP	L1710	Monitor	3CQ8194776	2008
HP	L1710	Monitor	3CQ8172ZGT	2008
HP	L1710	Monitor	3CQ819477X	2008
HP	L1710	Monitor	3CQ8172ZH4	2008
HP	L1710	Monitor	3CQ9172C8Q	2008
HP	L1710	Monitor	3CQ9172BZ6	2008
HP	1702	Monitor	CNN42538FP	2008
HP	DC5800	Computer	MXL8250DYQ	2008
HP	DC5800	Computer	MXL8250F3W	2008
HP	DC5800	Computer	2UA93101TX	2008
HP	DC5800	Computer	MXL8250F1J	2008
HP	DC5800	Computer	MXL8250F3X	2008
HP	DC5800	Computer	MXL8250DZR	2008
HP	DC5800	Computer	MXL8250F0S	2008
HP	DC5800	Computer	MXL8250F0M	2008
HP	DC5800	Computer	MXL8250F0G	2008
HP	DC5800	Computer	MXL8250DXS	2008
HP	L1710	Monitor	3CQ81946K8	2008
HP	L1710	Monitor	3CQ81946KW	2008
HP	L1710	Monitor	3CQ8194650	2008
HP	L1710	Monitor	3CQ819477B	2008
HP	L1710	Monitor	3CQ819463M	2008
HP	L1710	Monitor	CNC935P5X0	2008
HP	L1710	Monitor	3CQ81946K7	2008
HP	L1710	Monitor	3CQ819463H	2008
HP	DC5800	Computer	MXL8250DZJ	2008
HP	DC5800	Computer	MXL8250F1P	2008
HP	DC5800	Computer	MXL8250F0H	2008
HP	DC5800	Computer	MXL8250DZZ	2008
HP	DC5800	Computer	MXL8250F26	2008
HP	DC5800	Computer	MXL8250DZC	2008
HP	DC5800	Computer	MXL8250F00	2008
HP	DC5800	Computer	MXL8250F21	2008

HP	DC5800	Computer	MXL8250F0V	2008
HP	DC5800	Computer	MXL8250F37	2008
HP	DC5800	Computer	MXL8250F1Q	2008
HP	DC5800	Computer	MXL8250F0P	2008
HP	DC5800	Computer	MXL8250F0K	2008
HP	DC5800	Computer	MXL8250F04	2008
HP	DC5800	Computer	MXL8250F2G	2008
HP	DC5800	Computer	MXL8250F1K	2008
HP	DC5800	Computer	MXL8250CDD	2008
HP	DC5800	Computer	MXL8250F0J	2008
HP	DC5800	Computer	MXL8250DZ5	2008
HP	DC5800	Computer	MXL8250F2F	2008
HP	L1710	Monitor	3CQ819463Q	2008
HP	L1710	Monitor	3CQ9172C9L	2008
HP	L1710	Monitor	3CQ81946KZ	2008
HP	L1710	Monitor	3CQ81946K5	2008
HP	L1710	Monitor	3CQ8194630	2008
HP	L1710	Monitor	3CQ8194779	2008
HP	L1710	Monitor	3CQ9172C8N	2008
HP	L1710	Monitor	3CQ81946KX	2008
HP	L1710	Monitor	3CQ81946RS	2008
HP	L1710	Monitor	3CQ819477H	2008
HP	DC5800	Computer	MXL8250F0W	2008
HP	DC5800	Computer	MXL8250F2D	2008
HP	DC5800	Computer	MXL8250F0Z	2008
HP	DC5800	Computer	MXL8250F0Y	2008
HP	DC5800	Computer	MXL8250F1Z	2008
HP	DC5800	Computer	MXL8250F0F	2008
HP	DC5800	Computer	MXL8250F2P	2008
HP	DC5800	Computer	MXL8250DXZ	2008
HP	DC5800	Computer	MXL8250DZL	2008
HP	DC5800	Computer	MXL8250F0L	2008
HP	L1710	Monitor	3CQ819477Q	2008
HP	L1710	Monitor	3CQ81946Z2	2008
HP	L1710	Monitor	3CQ81946YW	2008
HP	L1710	Monitor	3CQ819477P	2008
HP	L1710	Monitor	3CQ8172ZGN	2008
HP	L1710	Monitor	3CQ81946YT	2008
HP	L1710	Monitor	3CQ819463F	2008
HP	L1710	Monitor	3CQ8194774	2008
HP	L1710	Monitor	3CQ819463S	2008
HP	L1710	Monitor	3CQ819477T	2008
HP	L1710	Monitor	3CQ819477N	2008
HP	L1710	Monitor	3CQ81946ZN	2008
HP	L1710	Monitor	3CQ81946L1	2008
HP	L1710	Monitor	3CQ8155NB9	2008
HP	L1710	Monitor	3CQ81946L4	2008

HP	L1710	Monitor	3CQ81946K3	2008
HP	DC5800	Computer	MXL8250F43	2008
HP	DC5800	Computer	MXL8250F3T	2008
HP	DC5800	Computer	MXL8250DZ6	2008
HP	DC5800	Computer	MXL8250F3M	2008
HP	DC5800	Computer	MXL8250DY5	2008
HP	DC5800	Computer	MXL8250DZX	2008
HP	DC5800	Computer	MXL8250DZV	2008
HP	DC5800	Computer	MXL8250F2C	2008
HP	DC5800	Computer	2UA93101TJ	2008
HP	DC5800	Computer	2UA93101TW	2008
HP	L1710	Monitor	3CQ81946K0	2008
HP	L1710	Monitor	3CQ81946KT	2008
HP	L1710	Monitor	3CQ819477V	2008
HP	L1710	Monitor	3CQ81946YZ	2008
HP	L1710	Monitor	3CQ81946RC	2008
HP	L1910	Monitor	CNC810PXH4	2008
HP	L1910	Monitor	CNC820QK7G	2008
HP	L1910	Monitor	CNC810PXCH	2008
HP	DC5800	Computer	MXL8250DY3	2008
HP	DC5800	Computer	MXL8250DY6	2008
HP	DC5800	Computer	MXL8250F02	2008
HP	DC5800	Computer	MXL8250F2R	2008
HP	DC5800	Computer	2UA93101TR	2008
HP	DC5800	Computer	2UA93101TY	2008
HP	DC5800	Computer	MXL8250F2T	2008
HP	DC5800	Computer	MXL8250F0X	2008
HP	DC5800	Computer	MXL8250F1Y	2008
HP	DC5800	Computer	2UA93101TV	2008
HP	L1710	Monitor	3CQ819463G	2008
HP	L1710	Monitor	3CQ81946GM	2008
HP	L1710	Monitor	3CQ819463Y	2008
HP	L1710	Monitor	3CQ81946GP	2008
HP	L1710	Monitor	3CQ8194633	2008
HP	L1710	Monitor	3CQ819463C	2008
HP	L1710	Monitor	3CQ819463B	2008
HP	L1710	Monitor	3CQ8194645	2008
HP	L1710	Monitor	3CQ8194648	2008
HP	L1710	Monitor	3CQ819464G	2008
HP	L1710	Monitor	3CQ8194649	2008
HP	L1710	Monitor	3CQ8194647	2008
HP	L1710	Monitor	3CQ8194642	2008
HP	L1710	Monitor	3CQ819463J	2008
HP	L1710	Monitor	3CQ8194646	2008
HP	L1710	Monitor	3CQ819464Y	2008
HP	L1710	Monitor	3CQ819464C	2008
HP	L1710	Monitor	3CQ819464Z	2008

HP	L1710	Monitor	3CQ819464D	2008
HP	L1710	Monitor	3CQ8194644	2008
HP	DC5800	Computer	MXL8250F46	2008
HP	DC5800	Computer	MXL8250F49	2008
HP	DC5800	Computer	MXL8250F4F	2008
HP	DC5800	Computer	MXL8250DYK	2008
HP	DC5800	Computer	MXL8250F4C	2008
HP	DC5800	Computer	MXL8250F3J	2008
HP	DC5800	Computer	MXL8250CDC	2008
HP	DC5800	Computer	MXL8250F40	2008
HP	DC5800	Computer	MXL8250F3F	2008
HP	DC5800	Computer	MXL8250F01	2008
HP	DC5800	Computer	MXL8250F27	2008
HP	DC5800	Computer	MXL8250F1D	2008
HP	DC5800	Computer	MXL8250F2X	2008
HP	DC5800	Computer	MXL8250F3K	2008
HP	DC5800	Computer	MXL8250F3D	2008
HP	DC5800	Computer	MXL8250F3V	2008
HP	DC5800	Computer	MXL8250DYJ	2008
HP	DC5800	Computer	MXL8250F3H	2008
HP	DC5800	Computer	MXL8250F47	2008
HP	DC5800	Computer	MXL8250F3L	2008
HP	L1710	Monitor	3CQ8194635	2008
HP	L1710	Monitor	3CQ8194638	2008
HP	L1710	Monitor	3CQ8194631	2008
HP	L1710	Monitor	3CQ819462Z	2008
HP	L1710	Monitor	3CQ819462X	2008
HP	L1710	Monitor	3CQ81946M6	2008
HP	L1710	Monitor	3CQ8172ZH8	2008
HP	L1710	Monitor	3CQ8194778	2008
HP	L1710	Monitor	3CQ8194634	2008
HP	L1710	Monitor	3CQ8194777	2008
HP	L1710	Monitor	3CQ8194637	2008
HP	L1710	Monitor	3CQ8194640	2008
HP	L1710	Monitor	3CQ8194641	2008
HP	L1710	Monitor	3CQ8194636	2008
HP	L1710	Monitor	3CQ8194639	2008
HP	L1710	Monitor	3CQ819463T	2008
HP	L1710	Monitor	3CQ819463Z	2008
HP	L1710	Monitor	3CQ819463D	2008
HP	DC5800	Computer	MXL8250F3Z	2008
HP	DC5800	Computer	MXL8250F4D	2008
HP	DC5800	Computer	MXL8250F48	2008
HP	DC5800	Computer	MXL8250F14	2008
HP	DC5800	Computer	MXL8250DY9	2008
HP	DC5800	Computer	MXL8250F2Q	2008
HP	DC5800	Computer	MXL8250DYL	2008

HP	DC5800	Computer	MXL8250F2V	2008
HP	DC5800	Computer	MXL8250F4G	2008
HP	DC5800	Computer	MXL8250F11	2008
HP	DC5800	Computer	MXL8250F4H	2008
HP	DC5800	Computer	MXL8250F2Z	2008
HP	DC5800	Computer	MXL8250F4B	2008
HP	DC5800	Computer	MXL8250F3S	2008
HP	DC5800	Computer	MXL8250F10	2008
HP	DC5800	Computer	MXL8250F2W	2008
HP	DC5800	Computer	MXL8250F32	2008
HP	DC5800	Computer	MXL8250DZM	2008
HP	DC5800	Computer	MXL8250DYM	2008
HP	DC5800	Computer	MXL8250F09	2008
HP	L1910	Monitor	CNC820QK7D	2008
HP	L1910	Monitor	CNC820QJWN	2008
HP	L1710	Monitor	3CQ8194643	2008
HP	L1710	Monitor	3CQ819477C	2008
HP	L1710	Monitor	3CQ81946L0	2008
HP	L1710	Monitor	3CQ819477F	2008
HP	L1710	Monitor	3CQ81946ZM	2008
HP	L1710	Monitor	3CQ8194772	2008
HP	L1710	Monitor	3CQ81946Z3	2008
HP	L1710	Monitor	3CQ819476W	2008
HP	L1710	Monitor	3CQ81946Z6	2008
HP	L1710	Monitor	3CQ81946YX	2008
HP	L1710	Monitor	3CQ8172ZGX	2008
HP	L1710	Monitor	3CQ81946ZH	2008
HP	L1710	Monitor	3CQ8194773	2008
HP	L1710	Monitor	3CQ81946ZC	2008
HP	L1710	Monitor	3CQ81946RY	2008
HP	L1710	Monitor	3CQ81946Z0	2008
HP	L1710	Monitor	3CQ81946Z1	2008
HP	L1710	Monitor	3CQ819477G	2008
HP	L1710	Monitor	3CQ819476Q	2008
HP	L1710	Monitor	3CQ81946Z5	2008
HP	L1710	Monitor	3CQ8194770	2008
HP	L1710	Monitor	3CQ819476N	2008
HP	L1710	Monitor	3CQ819476V	2008
HP	L1710	Monitor	3CQ819476X	2008
HP	L1710	Monitor	3CQ81946ZL	2008
HP	L1710	Monitor	3CQ81946ZB	2008
HP	L1710	Monitor	3CQ81946ZG	2008
HP	L1710	Monitor	3CQ819477S	2008
HP	L1710	Monitor	3CQ81946Z4	2008
HP	L1710	Monitor	3CQ8194771	2008
HP	L1710	Monitor	3CQ819476P	2008
HP	L1710	Monitor	3CQ819477K	2008

HP	L1710	Monitor	3CQ81946Z8	2008
HP	L1710	Monitor	3CQ81946RZ	2008
HP	L1710	Monitor	3CQ81946Z7	2008
HP	L1710	Monitor	3CQ81946ZF	2008
HP	L1910	Monitor	CNC820QJVC	2008
HP	L1910	Monitor	CNC820QJ61	2008
HP	L1910	Monitor	CNC810PXCM	2008
HP	L1910	Monitor	CNC820QJX7	2008
HP	L1910	Monitor	CNC810PXCG	2008
HP	L1910	Monitor	CNC820QJV4	2008
HP	L1910	Monitor	CNC820QJVL	2008
HP	L1910	Monitor	CNC820QJVG	2008
HP	L1710	Monitor	3CQ819476Y	2008
HP	L1710	Monitor	3CQ81946YY	2008
HP	L1710	Monitor	3CQ819476L	2008
HP	L1710	Monitor	3CQ81946ZK	2008
HP	L1710	Monitor	3CQ819476T	2008
HP	L1710	Monitor	3CQ81946ZJ	2008
HP	DC5800	Computer	MXL8250F1F	2008
HP	DC5800	Computer	MXL8250F1V	2008
HP	DC5800	Computer	MXL8250DY4	2008
HP	DC5800	Computer	MXL8250DZK	2008
HP	DC5800	Computer	MXL8250F1N	2008
HP	DC5800	Computer	MXL8250F2H	2008
HP	DC5800	Computer	MXL8250F3Q	2008
HP	DC5800	Computer	MXL8250DZH	2008
HP	DC5800	Computer	MXL8250F08	2008
HP	DC5800	Computer	MXL8250F3N	2008
HP	DC5800	Computer	MXL8250F3Y	2008
HP	DC5800	Computer	MXL8250F17	2008
HP	DC5800	Computer	MXL8250F1L	2008
HP	DC5800	Computer	MXL8250F1H	2008
HP	DC5800	Computer	MXL8250DYT	2008
HP	DC5800	Computer	MXL8250DYN	2008
HP	DC5800	Computer	MXL8250F3G	2008
HP	DC5800	Computer	MXL8250DYD	2008
HP	DC5800	Computer	MXL8250DYW	2008
HP	DC5800	Computer	MXL8250DYH	2008
HP	DC5800	Computer	MXL8250DYX	2008
HP	L1910	Monitor	CNC820QJ60	2008
HP	DC5800	Computer	MXL8250CDF	2008
HP	DC5800	Computer	MXL8250F2K	2008
HP	DC5800	Computer	MXL8250DZ0	2008
HP	DC5800	Computer	MXL8250F1S	2008
HP	DC5800	Computer	MXL8250F1W	2008
HP	DC5800	Computer	MXL8250F1T	2008
HP	DC5800	Computer	MXL8250F25	2008

HP	DC5800	Computer	MXL8250F1M	2008
HP	DC5800	Computer	MXL8250F3B	2008
HP	DC5800	Computer	MXL8250F38	2008
HP	DC5800	Computer	MXL8250F3C	2008
HP	DC5800	Computer	MXL8250F0B	2008
HP	DC5800	Computer	MXL8250F1G	2008
HP	DC5800	Computer	MXL8250F39	2008
HP	DC5800	Computer	MXL8250F22	2008
HP	DC5800	Computer	MXL8250F1X	2008
HP	DC5800	Computer	MXL8250F2N	2008
HP	DC5800	Computer	MXL8250F19	2008
HP	DC5800	Computer	MXL8250DZ4	2008
HP	DC5800	Computer	MXL8250F34	2008
HP	DC5800	Computer	MXL8250DZN	2008
HP	DC5800	Computer	MXL8250F45	2008
HP	DC5800	Computer	MXL8250F2M	2008
HP	DC5800	Computer	MXL8250F4J	2008
HP	DC5800	Computer	MXL8250DZS	2008
HP	L1910	Monitor	CNC820QK7B	2008
HP	L1910	Monitor	CNC820QJVN	2008
HP	L1910	Monitor	CNC820QJWW	2008
HP	L1910	Monitor	CNC820QJV0	2008
HP	L1910	Monitor	CNC820QJVM	2008
HP	L1910	Monitor	CNC820QJV1	2008
HP	L1910	Monitor	CNC820QJW7	2008
HP	L1910	Monitor	CNC820QJVF	2008
HP	L1910	Monitor	CNC810PXH6	2008
HP	L1910	Monitor	CNC820QJTW	2008
HP	L1910	Monitor	CNC820QJV3	2008
HP	L1910	Monitor	CNC820QJVB	2008
HP	L1910	Monitor	CNC820QJV6	2008
HP	L1910	Monitor	CNC820QJX0	2008
HP	L1910	Monitor	CNC820QJXC	2008
HP	L1910	Monitor	CNC820QJVD	2008
HP	L1910	Monitor	CNC820QJXD	2008
HP	L1910	Monitor	CNC820QJWS	2008
HP	L1910	Monitor	CNC820QJX5	2008
HP	L1910	Monitor	CNC820QJX8	2008
HP	L1910	Monitor	CNC820QJW9	2008
HP	L1910	Monitor	CNC820QJV9	2008
HP	L1910	Monitor	CNC820QJXB	2008
HP	L1910	Monitor	CNC810PXH3	2008
HP	L1910	Monitor	CNC820QJVK	2008
HP	L1910	Monitor	CNC820QJTY	2008
HP	L1910	Monitor	CNC820QJTZ	2008
HP	L1910	Monitor	CNC820QJXG	2008
HP	L1910	Monitor	CNC820QJXJ	2008

HP	L1910	Monitor	CNC820QJY3	2008
HP	L1910	Monitor	CNC820QJVH	2008
HP	L1910	Monitor	CNC820QJX6	2008
HP	L1910	Monitor	CNC820QJV7	2008
HP	LaserJet 4050n	Printer	USQL016363	2001
HP	LaserJet 6P	Printer	USDQ032133	1998
HP	LaserJet 6P	Printer	USDQ032114	1998
HP	L1710	Monitor	CNC819RMD2	2008
HP	L1710	Monitor	CNC819RMD9	2008
HP	L1710	Monitor	CNC819RNGZ	2008
HP	L1710	Monitor	CNC819RNH6	2008
HP	DC5800	Computer	MXL8250F7M	2008
HP	DC5800	Computer	MXL8250F76	2008
HP	DC5800	Computer	MXL8250F7P	2008
HP	DC5800	Computer	MXL8250F71	2008
HP	DC5800	Computer	MXL8250F78	2008
HP	DC5800	Computer	MXL8250F7H	2008
HP	DC5800	Computer	MXL8250F74	2008
HP	L1710	Monitor	CNC819RMQ8	2008
HP	L1710	Monitor	CNC819RNH5	2008
HP	L1710	Monitor	CNC819RMCV	2008
HP	L1710	Monitor	CNC819RNGT	2008
HP	DC5800	Computer	MXL8250F7R	2008
HP	DC5800	Computer	MXL8250F6W	2008
HP	DC5800	Computer	MXL8250F79	2008
HP	DC5800	Computer	MXL8250F7G	2008
HP	DC5800	Computer	MXL8250F6X	2008
HP	DC5800	Computer	MXL8250F77	2008
HP	DC5800	Computer	MXL8250F70	2008
HP	DC5800	Computer	MXL8250F7V	2008
HP	DC5800	Computer	MXL8250F73	2008
HP	DC5800	Computer	MXL8250F7F	2008
HP	L1710	Monitor	CNC819RNGV	2008
HP	L1710	Monitor	CNC819RMCS	2008
HP	L1710	Monitor	CNC819RMCY	2008
HP	L1710	Monitor	CNC819RK7R	2008
HP	L1710	Monitor	CNC819RMC9	2008
HP	L1710	Monitor	CNC819RNH4	2008
HP	L1710	Monitor	CNC819RMCP	2008
HP	L1710	Monitor	CNC819RNGX	2008
HP	L1710	Monitor	CNC819RGW9	2008
HP	L1710	Monitor	CNC819RMD0	2008
Dell	GX260	Computer	4KQVD21	2003
Dell	1702FP	Monitor	MX08G15247605316D08L	2005
Dell	E171FP	Monitor	MX08R339476053BCARY2	2005
Gateway	E6300	Computer	34744289	2006
HP	L1910	Monitor	CNC810PXCK	2008

HP	L1910	Monitor	CNC820QJWV	2008
HP	L1910	Monitor	CNC820QJX1	2008
HP	DC5800	Computer	MXL8250DZD	2008
HP	DC5800	Computer	MXL8250F20	2008
HP	DC5800	Computer	MXL8250DY0	2008
HP	L1910	Monitor	CNC820QJXH	2008
HP	L1910	Monitor	CNC820QJWZ	2008
HP	L1910	Monitor	CNC825NVJF	2008
HP	DC5800	Computer	MXL8250F18	2008
HP	DC5800	Computer	MXL8250F0D	2008
HP	L1910	Monitor	CNC820QJV8	2008
AVerMedia	AVerVision300p	Document Camera	36183 6040	2006
AVerMedia	AVerVision300af+	Document Camera	51728 08080P	2008
HP	LaserJet 1200	Printer	CNBB218901	2006
AVerMedia	AVerVision300af	Document Camera	42759 7040	2008
Dell	GX270	Computer	FWV1V31	2004
HP	DC5800	Computer	MXL8250F44	2008
HP	LaserJet 4200tn	Printer	CNBX412527	2006
HP	LaserJet 4100dtn	Printer	JPLGC13394	2005
HP	DC5800	Computer	MXL82706YG	2008
HP	DC5800	Computer	MXL8260Y13	2008
HP	Proliant ML350	Server	M01LLK811G	2005
Dell	SMP01	Server	FXDVD41	2005
HP	DC7100	Computer	2UB5160FF2	2008
HP	DC7100	Computer	2UB51609PD	2008
HP	DC7100	Computer	2UB51609P1	2008
HP	DC7100	Computer	2UB5160FCD	2008
HP	DC7100	Computer	2UA5160X13	2008
HP	DC7100	Computer	2UB51609S1	2008
HP	DC7100	Computer	2UB5160FB9	2008
HP	DC5800	Computer	MXL8250F7N	2008
Gateway	E2300	Computer	35630400	2005
Gateway	E-2610s	Computer	0040278223S	2004
Merit	POS Machine	Computer	SN02000181177	2002
Merit	POS Machine	Computer	641389	2002
HP		1702 Monitor	CNN42538Y1	2060
Gateway	700G	Monitor	MPC5A 50E 01428	2005
Dell	E171FP	Monitor	MX08R339476053B6AMGM	2004
Dell	E171FP	Monitor	MX08R339476053BCAPM1	2004
Gateway	FPD1730	Monitor	TL819A335019359	2004
Dell	E171FP	Monitor	MX08R339476053BEEW0B	2004
Dell	E171FP	Monitor	MX08R339476053BEEW2D	2004
Dell	E171FP	Monitor	MX08R339476053BCAPKV	2004
Dell	E171FP	Monitor	MX08R339476053BCAPK5	2004
Dell	E171FP	Monitor	MX08R339476053BDAS0M	2004
Toshiba	SD-3990SU	DVD Player	MC109D197165	2006
Toshiba	SD-3990SU	DVD Player	MC109D197193	2006

Toshiba	SD-3990SU	DVD Player	MC109D197157	2006
Zenith	XBV713	DVD Player	704INQU315132	2006
Dell	GX260	Computer	DXCLG21	2004
HP	LaserJet 6P	Printer	USDH129810	1998
HP	LaserJet 2100	Printer	USGH022998	2000
HP	LaserJet 6P	Printer	USDH129779	1998
HP	LaserJet 1200	Printer	CNBC033822	2005
HP	LaserJet P1505n	Printer	CNBK540779	2008
Epson	Sytlus Photo 960	Printer	EPVY013063	2006
Smart Techno	Airliner WS100-R1	Slate	8DZ022518	2008
Sennheiser	EW300 G2	Receiver	109230	2008
Sennheiser	EW300 G2	Receiver	168948	2008
Sennheiser	EW300 G2	Receiver	163805	2008
Sennheiser	EW300 G2	Receiver	109232	2008
SMC	TigerStack II 6624M	Switch	T115100365	2004
SMC	TigerStack II 6624M	Switch	T114801115	2004
Micron	Millennia	Computer	2841766-0001	2006
Dell	E171FP	Monitor	MX08R339476053BEEW3W	2004
Dell	E171FP	Monitor	MX08R339476053BEEW2M	2004
Gateway	700G	Monitor	MPC5A 50H 03780	2005

All items listed above are unserviceable and outdated based on the 5 year Technology Replacement Plan Board Meeting 4.13.11

Inventory ID	Name	Quantity in Stock	Reason for Surplus
ISBN0-07-825326-4	Algebra 1 Integration application,connections	154	Out of date, poor condition 1998
ISBN0-02-824875-9	Algebra 1, MultiCultural Activity	8	Out of date, poor condition 1998
ISBN0-0-07-600018-9	Assessment Handbook	7	Out of date, poor condition 1998
ISBN-0-13-365112-6	Chemical Interactions, Science Explorer	18	Out of date materials - 1993
ISBN0-02-684691-8	Connecting Math Concepts Levl C&D	61	Out of date materials
ISBN0-57039-900-15	Connection Handbook	4	Out of date materials
ISBN-0-07-603595-6	Every Mathematics Teachers Lesson Guide Gr 2, Vol 2	8	Discontinued Curriculum
ISBN-0-07-604524-2	Everyday Mathematic My First Math Book	15	Discontinued Curriculum
ISBN0-07-604537-4	Everyday Mathematics	382	Discontinued Curriculum
ISBN-1-57039-961-1	Everyday Mathematics Gr 4-6	2	Discontinued Curriculum
ISBN-1-57039-824-1	Everyday Mathematics 1st Grade Mathematics Masters	5	Discontinued Curriculum
ISBN-1-570390842-9	Everyday Mathematics 1st Grade Mathematics Masters	5	Discontinued Curriculum
ISBN-0-07-604558-7	Everyday Mathematics 2nd Gr Mathematics Masters	5	Discontinued Curriculum
ISBN-1-57039-919-4	Everyday Mathematics 5th grade Math Masters	3	Discontinued Curriculum
ISBN-1-57039-227-7	Everyday Mathematics Activity Book	64	Discontinued Curriculum
ISBN-1-57039-215-3	Everyday Mathematics Activity Book	7	Discontinued Curriculum
ISBN-1-57039-823-2	Everyday Mathematics Assess Bk	2	Discontinued Curriculum
ISBN-0-07-604543-9	Everyday Mathematics Assessment Handbk Grade 1	7	Discontinued Curriculum
ISBN-0-07-604561-7	Everyday Mathematics Differ. Book	1	Discontinued Curriculum
ISBN-0-07-604548-x	Everyday Mathematics Differentiation handbook	11	Discontinued Curriculum
ISBN-0-07-604561-7	Everyday Mathematics Differentiation Handbooks	7	Discontinued Curriculum
ISBN-0-07-584447-8	Everyday Mathematics Gr 2 Assessmt Book	3	Discontinued Curriculum
ISBN-0-07-55446-1	Everyday Mathematics Gr 2 Journal	3	Discontinued Curriculum
ISBN-1-57039-772-4	Everyday Mathematics Gr 2 Ops Book	4	Discontinued Curriculum
ISBN-1-57039-7376	Everyday Mathematics Gr 2 Skills Link	9	Discontinued Curriculum
ISBN-1-57039-505-5	Everyday Mathematics Gr 2 Teachers Lesson Guides	3	Discontinued Curriculum
ISBN-1-57039-220-x	Everyday Mathematics Gr 2 Vol 113	2	Discontinued Curriculum
ISBN-1-57039-238-2	Everyday Mathematics Gr 3 Activity	2	Discontinued Curriculum
ISBN-0-07-604576-5	Everyday Mathematics Gr 3 Assessment Book	8	Discontinued Curriculum
ISBN-1-5239-841-1	Everyday Mathematics Gr 3 Assessment Vol 1	3	Discontinued Curriculum
ISBN-0-07-604572-2	Everyday Mathematics Gr 3 Diff. Handbk	11	Discontinued Curriculum
ISBN-1-57039-946-8	Everyday Mathematics Gr 3 Home Links	9	Discontinued Curriculum
ISBN-1-57039-741-4	Everyday Mathematics Gr 3 Journal Vol 1	6	Discontinued Curriculum
ISBN-1-57039-237-4	Everyday Mathematics Gr 3 Journal Vol 2	2	Discontinued Curriculum
ISBN-0-07-604572-2	Everyday Mathematics Gr 3 Math Masters	5	Discontinued Curriculum
ISBN-1-57039-741-4	Everyday Mathematics Gr 3 Skills Link	15	Discontinued Curriculum
ISBN-0-07-603596-4	Everyday Mathematics Gr 3 Teachers Lesson Guide Vol 1	11	Discontinued Curriculum
ISBN-0-07-603597-2	Everyday Mathematics Gr 3 Teachers Lesson Guide Vol 2	10	Discontinued Curriculum
ISBN-0-07-604589-7	Everyday Mathematics Gr 4 Math Masters	8	Discontinued Curriculum
ISBN-0-07-605264-8	Everyday Mathematics Gr 5 Assessment Handbook	7	Discontinued Curriculum
ISBN-0-07-605267-2	Everyday Mathematics Gr 5 Differentiation handbook	10	Discontinued Curriculum
ISBN-0-07-605263-X	Everyday Mathematics Gr 5 Mathematics Masters	9	Discontinued Curriculum
ISBN-1-57039-961-1	Everyday Mathematics Gr k-3 teachers ref	9	Discontinued Curriculum
ISBN-978007654847-7	Everyday Mathematics Gr K-4 Algorithms bk	2	Discontinued Curriculum

Inventory ID	Name	Quantity in Stock	Reason for Surplus
ISBN-0-07-604525-0	Everyday Mathematics Gr K-4 Guide to Activities	5	Discontinued Curriculum
ISBN-1-57039-900-x	Everyday Mathematics Gr K-4 Home Connection	7	Discontinued Curriculum
ISBN-0-07-605572-2	Everyday Mathematics Gr K-4 Masters	4	Discontinued Curriculum
ISBN-978007618788-1	Everyday Mathematics Gr K-4 Skills Link	9	Discontinued Curriculum
ISBN-1-57039-932-8	Everyday Mathematics Gr1-3 Minute Math	51	Discontinued Curriculum
ISBN-0-07-603599-9	Everyday Mathematics Gr4, teachers les Vol2	10	Discontinued Curriculum
ISBN-0-07-603598-0	Everyday Mathematics Gr4, teachers lesson	10	Discontinued Curriculum
ISBN-0-07-603592-1	Everyday Mathematics Grade 1 Vol 1	10	Discontinued Curriculum
ISBN-0-07-584444-3	Everyday Mathematics Grade 1, Vol 2	11	Discontinued Curriculum
ISBN-1-57039-231-5	Everyday Mathematics Grade 3 Teachers Manual/Lesson Guide	3	Discontinued Curriculum
ISBN-0-07-604516-1	Everyday Mathematics Home Connection Handbook Early Childhood	18	Discontinued Curriculum
ISBN-0-07-604547-1	Everyday Mathematics Home Connection Handbook Gr 1-3	29	Discontinued Curriculum
ISBN-0-07-604596-x	Everyday Mathematics Home Connection Handbook Gr 4-6	18	Discontinued Curriculum
ISBN-1-57039-002-9	Everyday Mathematics Home Links	10	Discontinued Curriculum
ISBN0-1-5239-964-8	Everyday Mathematics Home Links	9	Discontinued Curriculum
ISBN0-1-570-39-698-1	Everyday Mathematics Home Links & Boxes	31	Discontinued Curriculum
ISBN-1-570390699-x	Everyday Mathematics Home Links Mathematics Boxes	3	Discontinued Curriculum
ISBN-1-57039-225-0	Everyday Mathematics Journal 1	38	Discontinued Curriculum
ISBN-1-57039-226-9	Everyday Mathematics Journal 2	70	Discontinued Curriculum
ISBN-1-57039-500-x	Everyday Mathematics Journal Vol 1	1	Discontinued Curriculum
ISBN0-1-57039-840-2	Everyday Mathematics Journals	9	Discontinued Curriculum
ISBN-1-57039-213-7	Everyday Mathematics Journals Vol1	11	Discontinued Curriculum
ISBN-1-57039-214-5	Everyday mathematics Journsals Vol2	16	Discontinued Curriculum
ISBN-0-07-524433-8	Everyday Mathematics K Assess Book	1	Discontinued Curriculum
ISBN-0-07-604525-0	Everyday Mathematics K Guide to Activities	6	Discontinued Curriculum
ISBN-0-07-609737-4	Everyday Mathematics K Home Links	5	Discontinued Curriculum
ISBN-0-07-604527-7	Everyday Mathematics K Masters	26	Discontinued Curriculum
ISBN-0-07-600213-6	Everyday Mathematics K Math at Home	109	Discontinued Curriculum
ISBN-1-570390049-5	Everyday Mathematics K Minute Math	5	Discontinued Curriculum
ISBN-0-07-603600-6	Everyday Mathematics Lesson Guide Vol 2, Grade 5	21	Discontinued Curriculum
ISBN0-1-57039-824-0	Everyday Mathematics Masters	8	Discontinued Curriculum
ISBN-0-07-604559-5	Everyday Mathematics Mathematics Assessment Handbook	4	Discontinued Curriculum
ISBN-1-57039-210-2	Everyday Mathematics Minute Math Gr1-3	5	Discontinued Curriculum
ISBN-1-57039-221-8	Everyday Mathematics Resource Bk	2	Discontinued Curriculum
ISBN-1-57039-743-0	Everyday Mathematics Skills Link	5	Discontinued Curriculum
ISBN-0-07-604555-2	Everyday Mathematics Student Journal	4	Discontinued Curriculum
ISBN0-1-57039-846-1	Everyday Mathematics Student Ref Bk	189	Discontinued Curriculum
ISBN0-1-57039-915-8	Everyday Mathematics Study Links	4	Discontinued Curriculum
ISBN-1-57039-241-2	Everyday Mathematics teacher manual	1	Discontinued Curriculum
ISBN-0-07-584-487-7	Everyday Mathematics Teachers LessonGuide Gr 3, Vol 2	7	Discontinued Curriculum
ISBN-1-57039-913-1	Everyday Mathematics Teachers Lesson Guide 5th gr Vol2	2	Discontinued Curriculum
ISBN-0-07-603594-8	Everyday Mathematics Teachers Lesson Guide Gr 2, Vol 1	6	Discontinued Curriculum
ISBN-0-07-584-486-9	Everyday Mathematics Teachers Lesson Guide Gr 3, Vol 1	4	Discontinued Curriculum
ISBN-0-07-605260-5	Everyday Mathematics U of Chicago Student Ref Book	66	Discontinued Curriculum

Inventory ID	Name	Quantity in Stock	Reason for Surplus
ISBN-0-07-604-504-6	Everyday Mathematics U of Chicao Student Ref Book	27	Discontinued Curriculum
ISBN-0-07-604569-2	Everyday Mathematics U of Chicao Student Ref Book	31	Discontinued Curriculum
ISBN-1-57039-919-0	Everyday Mathematics U of Chicao Student Ref Book	88	Discontinued Curriculum
ISBN-0-07-604595-1	Everyday Mathematics UofChicago Math Proj Ref Man Gr 4-6	20	Discontinued Curriculum
ISBN-0-07-604594-3	Everyday Mathematics UofChicago Math Project Teachers Ref Man Gr 1-3l	28	Discontinued Curriculum
ISBN0-01-57039-842-9	Everyday Mathematics Workbooks/Study Links	10	Discontinued Curriculum
ISBN-0-07-604590-0	Everyday Mathematics. Gr 4 Assessments	10	Discontinued Curriculum
ISBN-0-07-604597-8	Everyday Mathematics. Gr 4 Differ.	9	Discontinued Curriculum
ISBN0-1-57039-911-5	Everyday MathematicsStudent Red Book	23	Discontinued Curriculum
ISBN0-1-57039-241-2	Everyday MathematicsTeachers Ref Manual	16	Discontinued Curriculum
ISBN0-07-600073-7	Everyday MathematicsTeachers Reference Manual, Handbooks	40	Discontinued Curriculum
ISBN0-8445-7015	Laidlaw Mathematics	9	Out of date materials - 1993
ISBN-978-007-874850-3	Math Connects Course 3, Prentice Hall Math.	34	Out of date materials
ISBN0-02-825031-1	Pre-Algebra	44	Out of date, poor condition 1998
ISBN-0-7460-04860	Seas & Oceans	21	Discontinued Curriculum
ISBN-1-58356-847-6	Solar Energy	14	Discontinued Curriculum

Everyday Mathematics was purchased in the 2000-2001 school year. Everyday Mathematics has been replaced by Math Connects per our curriculum adoption schedule.

Steilacoom Historical School District No. 1
510 Chambers
Steilacoom, WA 98388

Resolution 809-09-25-13

A Resolution of the Board of Directors (the "Board") of the Steilacoom Historical School District No. 1 (the "District") to proceed with the Old Pioneer Middle School project.

WHEREAS the Board has considered the need for the Old Pioneer Middle School project initiated in 2013;

WHEREAS, on July 26, 2013, an Environmental Checklist, prepared by AHBL, Inc. on behalf of the District, was issued for review and comment;

WHEREAS, on August 20, 2013, the District's SEPA Responsible Official issued a Mitigated Determination of Nonsignificance ("MDNS") for the proposal to undertake the "Proposed Action" (as further defined in the MDNS) upon review of the environmental checklist, its attachments, and other information on file with the District, and the policies, plans, and regulations designated by the District as a basis for the exercise of its SEPA authority;

WHEREAS, limited comments were received by the District regarding the Proposed Action within the 14-day comment period following issuance of the MDNS and these comments were deemed to be addressed by the proposed Mitigation Measures for the project found in the MDNS;

WHEREAS, the Board previously adopted Board Policy No. 6890, which, together with Chapter 197-11 WAC, establishes procedures for compliance with SEPA (hereinafter the District's "SEPA Policies"). The Board finds that these procedures have been appropriately applied and followed in connection with the issuance of the MDNS;

WHEREAS, the District has determined to proceed with the Old Pioneer Middle School project, having fully reviewed and considered the impacts of the Proposed Action, as discussed in the Environmental Checklist and defined in the MDNS, and having determined various Mitigation Measures to be implemented in connection with the Proposed Action; and

WHEREAS, the Notice of Action, which will be issued September 30, 2013, is complete and available for public review;

NOW THEREFORE BE IT RESOLVED that:

1. The Board adopts the Findings of Fact set forth in the MDNS at pages 2-4.
2. The Board concludes that the District must proceed with the Proposed Action and complete the Old Pioneer Middle School project.

3. The Board adopts the Mitigation Measures as set forth at pages 4-6 of the MDNS.

4. Based upon the foregoing findings of fact and conclusions, the Board shall, and hereby does, authorize and direct the District Superintendent (or her designee), on behalf of the District, subject to and in accordance with all applicable law, to proceed with the Proposed Action and to implement the Mitigation Measures identified above.

ADOPTED this 25th day of September 2013.

By: _____
Samuel T. Scott, Board Chair

By: _____
Kevin Callanan, Board Vice Chair

By: _____
Mike Winkler, Director

By: _____
Don Denning, Director

By: _____
Yoshie Wong, Director

ATTEST:

Kathi Weight,
Superintendent and
Secretary for the Board

Steilacoom Historical School District Board of Directors

REGULAR BOARD MEETING

Date: September 25, 2013

TO: Members, Steilacoom Historical School District Board of Directors

ISSUE: X **ACTION** Approval to Bid 1918 Project
 INFORMATION

BACKGROUND INFORMATION:

Construction documents have been completed for the 1918 Project. We are seeking permission to publically bid the 1918 remodel. Ray Mow and Calvin Gasaway will be providing an update on the following during their report to the Board:

Project Schedule
Permitting
PRB Follow-up
Cost Estimate
Design

RECOMMENDED DECISION:

It is the recommendation of the Superintendent to approve the motion to authorize the 1918 project to be bid publically.

Report prepared by:

Kathi Weight-Superintendent

Jim Brittain, Executive Director of Finance and Operations

MEDICATION AT SCHOOL

Under normal circumstances prescribed oral medication and oral over the counter medication should be dispensed before and/or after school hours under supervision of the parent or guardian.

If a student must receive prescribed or non-prescribed (over –the-counter) oral or topical medication, eye drops or ear drops (“medications”) from an authorized staff member, the parent must submit a written authorization accompanied by a written request from a licensed health professional prescribing within the scope of his or her prescriptive authority. Oral medications are administered by mouth either by swallowing or inhaling including through a mask that covers the mouth or mouth and nose. If the medication will be administered for more than fifteen consecutive days, the health professional must also provide written, current and unexpired instructions for the administration of the medication.

The superintendent will establish procedures for:

- A. Delegating, training and supervision of staff members in the administration of prescribed or non- prescribed oral medication to students by a physician or registered nurse;
- B. Designating staff members who may administer prescribed or non-prescribed oral medication to students;
- C. Obtaining signed and dated parental and health professional request for the dispensing of prescribed or non-prescribed oral medications, including instructions from health professional if the medication is to be given for more than fifteen(15) days;
- D. Storing prescribed or non-prescribed medication in a locked or limited access facility;
- E. Maintaining records pertaining to the administration of prescribed or non-prescribed oral medication; and
- F. Permitting, under limited circumstances, students to carry and self-administer medications necessary to their attendance at school.

Nasal inhalers, suppositories and non-emergency injections may not be administered by school staff other than registered nurses and licensed practical nurses. No medication will be administered by injection except when a student is susceptible to a predetermined, life-endangering situation. In such an instance, the parent will submit a written and signed permission statement. Such an authorization will be supported by signed and dated written orders accompanied by supporting directions from the licensed health professional. A staff member will be trained prior to injecting a medication.

If the district decides to discontinue administering a student’s medication, the superintendent or designee must provide notice to the student’s parent or guardian orally and in writing prior to the discontinuance. There must be a valid reason for the discontinuance that does not compromise the health of the student or violate legal protections for the disabled.

Cross-References:	Model Policy 3419	Self-Administration of Asthma and Anaphylaxis Medications
	Model Policy 3420	Anaphylaxis Prevention and Response
Legal References:	RCW 28A.210.260	Public and Private Schools – Administration of Oral Medication by Conditions
	RCW 28A.210.270	Public and Private Schools – Administration of Oral Medication by Immunity from Liability
Management Resources:	<i>Policy News</i> , August 2012	“Medication” Definition Expanded
	<i>Policy News</i> , February 2001	Oral Medication Definition Expanded

Adoption Date: 2.27.08

School District Name: Steilacoom Historical School District No. 1

Revised: 9.25.13

REGULAR BOARD MEETING

ISSUE: X **ACTION** Third Reading Policy 3419 Self-Administration of Asthma
and Anaphylaxis Medications

 _____ **INFORMATION** _____

There are no revisions from Second Reading.

FISCAL IMPLICATIONS: None

It is the recommendation of the Superintendent to approve Policy 3419.

Susanne Beauchaine-Executive Director Student Services

SELF-ADMINISTRATION OF ASTHMA AND ANAPHYLAXIS MEDICATIONS

Asthma is an inflammatory disease of the respiratory tract. Anaphylaxis is a life-threatening allergic reaction that may involve systems of the entire body. Anaphylaxis is a medical emergency that requires immediate medical treatment and follow-up care by an allergist/immunologist.

It is the policy of the Steilacoom Historical School District board of directors that students with asthma or anaphylaxis are afforded the opportunity to self-administer prescribed medications. The students' parent or guardian will submit a written request and other documentation required by the school. The student's prescribing health care provider must provide a written treatment plan.

The student must demonstrate to the school's professional registered nurse that the student is competent to possess and self-administer prescribed medications during school and at school sponsored events.

The superintendent will establish procedures that implement this policy and follow emergency rescue procedures outlined in the most recent edition of *AMES: Asthma Management in Educational Settings*, in cases of suspected asthma and the emergency rescue procedures outlined in guidelines provided by the Office of the Superintendent of Public Instruction in cases of suspected anaphylaxis.

Cross References:	Policy 3416	Medication at School
	Policy 3420	Anaphylaxis Prevention and Response
	Policy 2161	Special Education and Related Services for Eligible Students
	Policy 2162	Education of Students with Disabilities under Section 504
Legal Reference:	42 U.S.C. 280, Section 399	Public Health Service Act
	42 U.S.C. 12212	Section 512 Americans with Disabilities Act of 1990
	34 CFR Part 104	Section 504 of Rehabilitation Act of 1973
	Chapter 462, Laws of 2005	Relating to the prevention, diagnosis, and treatment of asthma.
	RCW 28A.210.370	Students with Asthma
	RCW 28A.210.380	Anaphylaxis-Policy guidelines-Procedures-Reports

Management Resources:

Policy News, August, 2012

Policy News, February 2009

OSPI, March 2009

Self-Administration of Asthma and
Anaphylaxis Medications

Anaphylaxis Prevention Policy Required

Guidelines for the Care of Students with Anaphylaxis

Adoption Date: 2.27.08

School District Name: Steilacoom Historical School District

Revised: 09.25.13

ANAPHYLAXIS PREVENTION AND RESPONSE

Anaphylaxis is a life-threatening allergic reaction that may involve systems of the entire body. Anaphylaxis is a medical emergency that requires immediate medical treatment and follow-up care by an allergist/immunologist.

The Steilacoom Historical School District board of directors expects school administrators, teachers and support staff to be informed and aware of life threatening allergic reactions (anaphylaxis) and how to deal with the resulting medical emergencies. For students, some common life threatening allergens are peanuts, tree nuts, fish, bee or other insect stings, latex and some medications. Affected students require planned care and support during the school day and during school sponsored activities.

Parents/guardians are responsible for informing the school about their student's potential risk for anaphylaxis and for ensuring the provision of ongoing health information and necessary medical supplies. The district will take reasonable measures to avoid allergens for affected students. The district will also train all staff in the awareness of anaphylaxis and prepare them to respond to emergencies. Additionally, student specific training will be provided for appropriate personnel.

Even with the district's best efforts, staff and parents/guardians need to be aware that it is not possible to achieve a completely allergen-free environment. However, the district will take precautions to reduce the risk of a student having an anaphylactic reaction by developing strategies to minimize the presence of allergens in schools.

The superintendent will establish procedures that implement this policy and to follow emergency rescue procedures outlined in guidelines provided by the Office of the Superintendent of Public Instruction in cases of suspected anaphylaxis.

Cross References: Model Policy 3419

Self-Administration of Asthma and
Anaphylaxis Medications

Legal References: RCW 28A.210.380

Anaphylaxis – Policy Guidelines –
Procedures – Reports

Management Resources:

Policy News, August 2012
Policy News, February 2009
OSPI, March 2009

Anaphylaxis Prevention and Response
Anaphylaxis Prevention Policy Required
Guidelines for the Care of Students with
Anaphylaxis

Adoption Date: 2.27.08

School District Name: Steilacoom Historical School District No. 1

Revised: 9.25.13

Steilacoom Historical School District Board of Directors

REGULAR BOARD MEETING

Date: September 25, 2013

TO: Members, Steilacoom Historical School District Board of Directors

ISSUE: x **ACTION: Second Reading of Policy 2255 – Alternative Learning Experience Programs**
 INFORMATION

BACKGROUND INFORMATION:

Policy 2255 is revised specifically to change language in the current policy that references WAVA.
Revisions follow WSSDA's model policy language.

FISCAL IMPLICATIONS:

None.

RECOMMENDED DECISION:

It is the recommendation of the Superintendent to approve Policy 2255 – Alternative Learning Experience.

Report prepared by: Julie Wright, Director of Teaching and Learning

ALTERNATIVE LEARNING EXPERIENCE

INSTRUCTION

Alternative Learning Experience Programs—General

The Board of Directors recognizes that students with unique needs may experience enhanced academic success in a non-traditional school setting. The district supports alternative learning experience-based programs that offer student-centered curriculum, varied instructional methods, delivery of curriculum materials and a flexible environment that responds to student needs.

The district shall provide alternative learning experience programs in accordance with state law and regulations, district policies and procedures, and available staff and program support.

In order to provide students with alternative learning experience programs that meet these minimum requirements, the Board directs that students may not participate in any alternative learning experience program, as defined under WAC 392-121-182, without the prior written approval of the Superintendent or his/her designee.

The Board will adopt and annually review written policies authorizing ALE programs, including each ALE program and program provider. The policy must designate, by title, one or more school district official(s) responsible for overseeing the district's ALE courses or programs.

The district establishes the following alternative program(s) provided on site or over the internet or by other electronic means, as defined in WAC 392-121-182:

OSPI Approved ALE Provider

The school district official responsible for this program(s) is:

Director of Teaching and Learning

The school district official responsible for overseeing each ALE program will report at least annually to the board. This annual report will include at least the following:

- A. Documentation of ALE student headcount and full-time equivalent enrollment claimed for basic education funding;
- B. Identification of the overall ratio of certificated instructional staff to full-time equivalent students enrolled in each ALE program; The number of certificated instructional staff in each ALE program;
- C. A description of how the program supports the district's overall goals and objectives for student academic achievement; and

D. Results of any self-evaluations.

The district will submit an annual report to the Superintendent of Public Instruction detailing the costs and purposes of any expenditures made to purchase or contract for instructional or co-curricular experiences and services that are included in an ALE written student learning plan, along with the substantially similar experiences or services made available to students enrolled in the district's regular instructional program.

The superintendent is directed to develop procedures consistent with WAC 392-121-182 to govern the administration of the district's ALE program.

Cross References:	Model Policy 2020	Curriculum Development and Adoption of Instructional Materials
	Model Policy 2024	Online Learning
Legal References:	RCW 28A.150.262	Defining full-time equivalent student — Students receiving instruction through alternative learning experience online programs — Requirements — Rules.
	RCW 28A.150.305	Alternative educational service providers — Student eligibility.
	RCW 28A.150.325	Alternative learning experience programs – Generally – Rules
	RCW 28A.250.050	Student access to online courses and online learning programs — Policies and procedures — Dissemination of information — Development of local or regional online learning programs.
	WAC 392-121-107	Definition-Course of study
	WAC 392-121-182	Alternative Learning Experience
	WAC 392-121-188	Instruction provided under contract
Management Resources:		
	<i>Policy & Legal News</i> , February 2013	Corrections
	<i>Policy News</i> , October 2011	Alternative Learning Experience
	<i>Policy News</i> , October 2012	Alternative Learning Experience

Adoption Date: 2.27.08

School District Name: Steilacoom Historical School District

Revised: 10.13.10; 9.25.13